

B FAMILY[®]
BEDDING
CONTEMPORARY LIVING

TESSUTI

Fabrics

Tissus

Stoffe

2024

01 marzo



TESSUTO

Fabric - Tissu - Stoffe



PELLE

Leather - Cuir - Leder

CAT. | KAT. **A**

»

CAT. | KAT. **B**

»

CAT. | KAT. **C**

»

CAT. | KAT. **1**

»

CAT. | KAT. **2**

»

CAT. | KAT. **B**
Bag

»

CAT. | KAT. **C**
Bag

»

CURA & MANUTENZIONE: GUIDA ALLE ICONE

Care & Maintenance: ICON GUIDE

Soin & Maintenance: GUIDE DES ICÔNES

Pflege & Wartung: SYMBOLLEITFADEN

QUESTO PDF È INTERATTIVO.

Per accedere alle informazioni desiderate, fai clic sui pulsanti o sui nomi dei tessuti e sarai reindirizzato alla destinazione corrispondente.

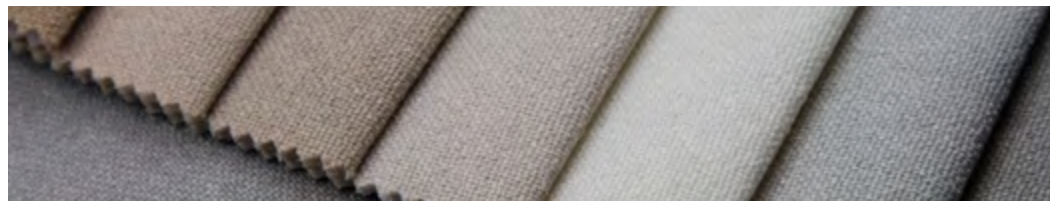
THIS PDF IS INTERACTIVE. To access the information you want, click on the buttons or fabric names and you will be redirected to the corresponding destination.

CE PDF EST INTERACTIF. Pour accéder aux informations souhaitées, cliquez sur les boutons ou les noms des tissus et vous serez redirigé vers la destination correspondante.

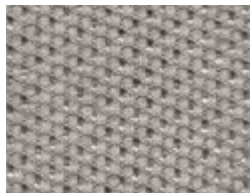
DIESES PDF IST INTERAKTIV. Um auf die gewünschten Informationen zuzugreifen, klicken Sie auf die Schaltflächen oder Namen der Stoffe und Sie werden zum entsprechenden Ziel weitergeleitet.

TESSUTO

Fabric - Tissu - Stoffe



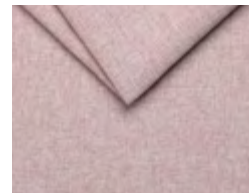
ACAPULCO »



ALICANTE »



ANTIGUA »



ATENE »

ACAPULCO

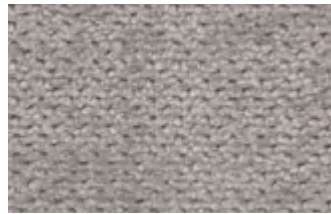
ALICANTE »

ANTIGUA »

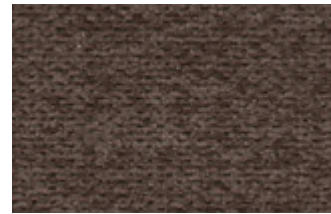
ATENE »



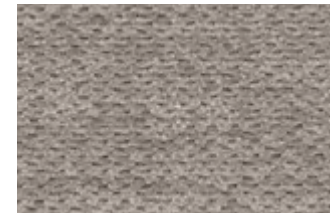
Acapulco 01



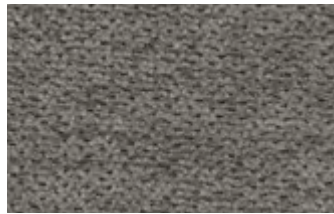
Acapulco 03



Acapulco 04



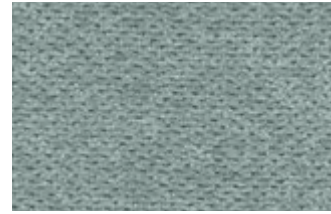
Acapulco 07



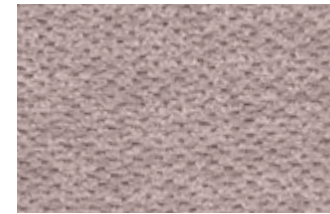
Acapulco 08



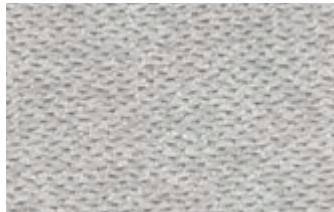
Acapulco 12



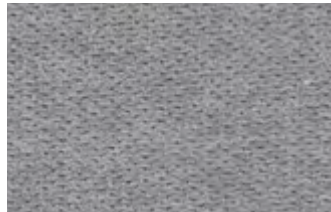
Acapulco 18



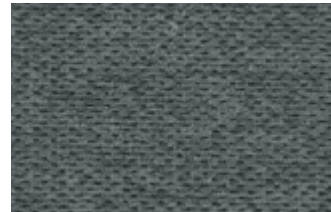
Acapulco 19



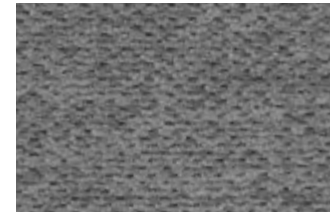
Acapulco 20



Acapulco 21



Acapulco 22



Acapulco 23

INFORMAZIONI TECNICHE

Technical information - informations techniques - technische Informationen

Composizione 92% Polyester /
Composition 8% Nylon
*Composition-
Zusammensetzung*

Altezza

*Height
Hauteur
Höhe*

Peso

Weigh 467 g/m (+/- 5%)
Poids
Gewicht

Martindale

Martindale abrasion 55 000

Pilling

Resistance to pilling 5



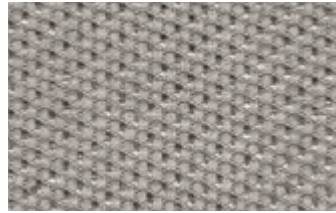
Idrorepellente
Water repellent - Hydrofuge
Wasserabweisend



CURA & MANUTENZIONE

*Care & Maintenance- Entretien et Maintenance -
Pflege & Wartung*





Alicante 87



Alicante 1602



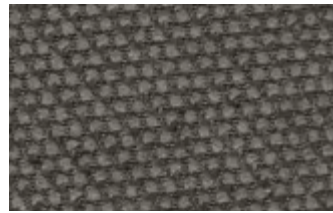
Alicante 1608



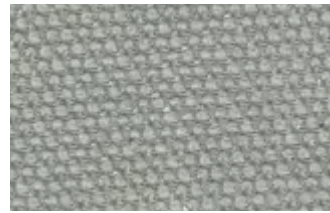
Alicante 1615



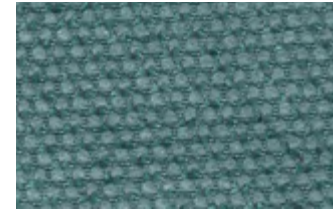
Alicante 1617



Alicante 1624



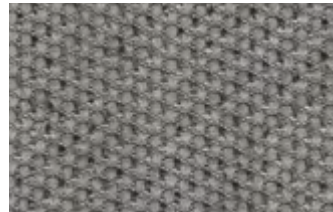
Alicante 1672



Alicante 1675



Alicante 1683



Alicante 1692



Alicante 1696



Alicante 1697

[ACAPULCO »](#)

ALICANTE

[ANTIGUA »](#)

[ATENE »](#)

INFORMAZIONI TECNICHE

*Technical information - informations techniques -
 technische Informationen*

Composizione

Composition 90% Polyester
 Composition- 10% Nylon
 Zusammensetzung

Altezza

Height
 Hauteur
 Höhe

Peso

Weigh 330 g/m2 (+/- 5%)
 Poids
 Gewicht

Martindale

Martindale abrasion >45 000

Pilling

Resistance to pilling 4



Idrorepellente
 Water repellent - Hydrofuge
 Wasserabweisend

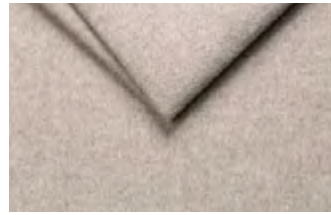
CURA & MANUTENZIONE

*Care & Maintenance- Entretien et Maintenance -
 Pflege & Wartung*





Antigua 01



Antigua 02



Antigua 04



Antigua 05



Antigua 06



Antigua 08



Antigua 09



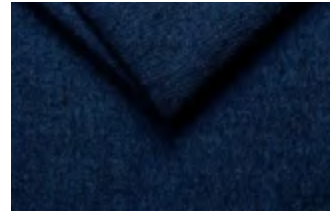
Antigua 11



Antigua 12



Antigua 14



Antigua 15



Antigua 16



Antigua 17



Antigua 18



Antigua 19

[ACAPULCO »](#)

[ALICANTE »](#)

ANTIGUA

[ATENE »](#)

INFORMAZIONI TECNICHE

*Technical information - informations techniques -
technische Informationen*

Composizione

Composition 100% Polyester
Composition-
Zusammensetzung

Altezza

Height
Hauteur
Höhe

Peso

Weigh 400 g/m2 (+/- 10%)
Poids
Gewicht

Martindale 115 000

Martindale abrasion

Pilling 4

Resistance to pilling



Pulizia facile
con acqua

Easy water cleaning - Nettoyage facile à l'eau - Einfache
reinigung mit wasser



STANDARD
100



20.HPL.30144
Hohenstein HTTI

CURA & MANUTENZIONE

*Care & Maintenance - Entretien et Maintenance -
Pflege & Wartung*





Atene 01



Atene 02



Atene 03



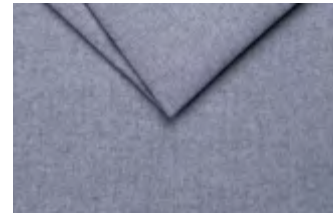
Atene 06



Atene 07



Atene 08



Atene 09



Atene 10



Atene 12



Atene 13



Atene 14



Atene 16



Atene 17



Atene 18



Atene 20

ACAPULCO »

ALICANTE »

ANTIGUA »

ATENE

**INFORMAZIONI
 TECNICHE**

*Technical information - informations techniques -
 technische Informationen*

Composizione 100% Polyester
Composition
Composition-
Zusammensetzung


Altezza

Height
Hauteu
Höhe

Peso 380 g/m (+/- 5%)
Weigh
Poids
Gewicht

Martindale > 45 000
Martindale abrasion

Pilling 4
Resistance to pilling

 Pulizia facile
 con acqua
*Easy water cleaning - Nettoyage facile à l'eau - Einfache
 reinigung mit wasser*

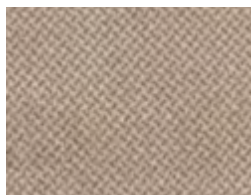
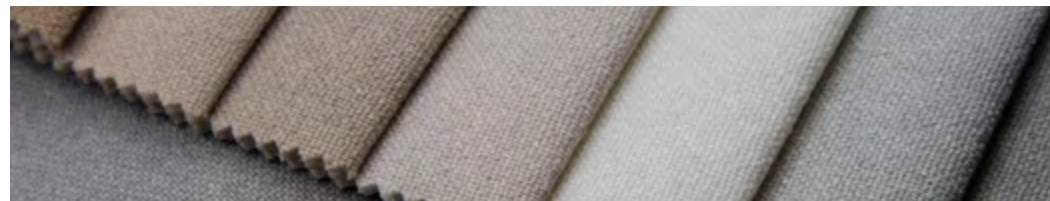
CURA & MANUTENZIONE

*Care & Maintenance- Entretien et Maintenance -
 Pflege & Wartung*

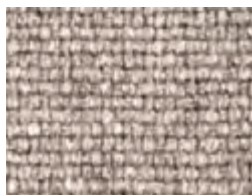


TESSUTO

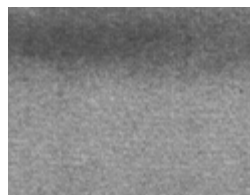
Fabric - Tissu - Stoffe



APP »



BALI »



BALTIMORA »



BON BON »



DREAM »



FRIDA »



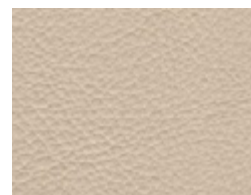
MAIA »



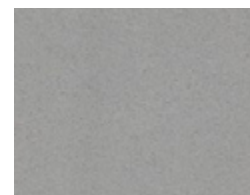
MARTIN »



ONTARIO »



STELLA »



TEKNOFIBRA »

APP

[BALI »](#)

[BALTIMORA »](#)

[BON BON »](#)

[DREAM »](#)

[FRIDA »](#)

[MAIA »](#)

[MARTIN »](#)

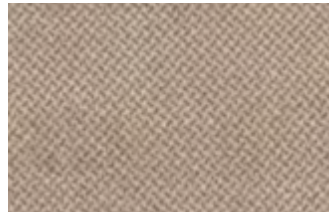
[ONTARIO »](#)

[STELLA »](#)

[TEKNOFIBRA »](#)



App 15



App 25



App 45



App 57



App 66



App 104

**INFORMAZIONI
TECNICHE**

*Technical information - informations techniques -
technische Informationen*

Composizione

Composition 100% Polyestere
Composition-
Zusammensetzung

Altezza

Height
Hauteur
Höhe

Peso

Weigh 430 gr/ml
Poids
Gewicht

Martindale 30.000

Martindale abrasion

Pilling

Resistance to pilling

CURA & MANUTENZIONE

*Care & Maintenance- Entretien et Maintenance -
Pflege & Wartung*



[APP »](#)

BALI

[BALTIMORA »](#)

[BON BON »](#)

[DREAM »](#)

[FRIDA »](#)

[MAIA »](#)

[MARTIN »](#)

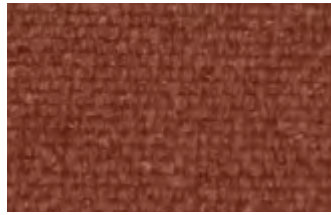
[ONTARIO »](#)

[STELLA »](#)

[TEKNOFIBRA »](#)



Bali 305



Bali 307



Bali 315



Bali 402



Bali 412



Bali 603



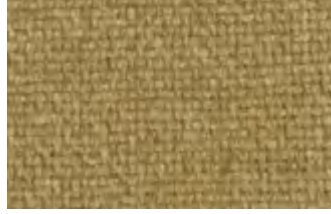
Bali 604



Bali 706



Bali 714



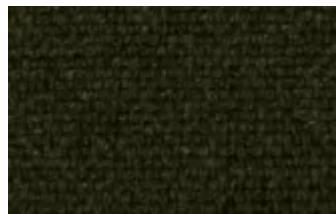
Bali 812



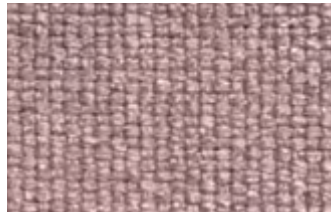
Bali 800



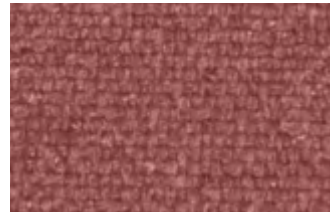
Bali 806



Bali 814



Bali 900



Bali 903

INFORMAZIONI TECNICHE

*Technical information - informations techniques -
technische Informationen*

Composizione

Composition 100% Polyestere
Composition-
Zusammensetzung

Altezza

Height 140 cm
Hauteu
Höhe

Peso

Weigh 525 g/m (+/- 4%)
Poids
Gewicht

Martindale >60.000

Martindale abrasion

Pilling

Resistance to pilling



Idrorepellente
Water repellent - Hydrofuge
Wasserabweisend



Irrestringibile
No shrink - Irrétrécissable
- krumpfecht

CURA & MANUTENZIONE

*Care & Maintenance - Entretien et Maintenance -
Pflege & Wartung*



[APP »](#)

[BALI »](#)

BALTIMORA

[BON BON »](#)

[DREAM »](#)

[FRIDA »](#)

[MAIA »](#)

[MARTIN »](#)

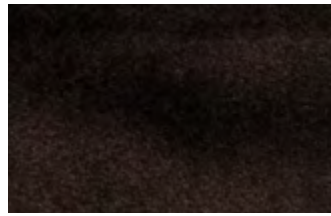
[ONTARIO »](#)

[STELLA »](#)

[TEKNOFIBRA »](#)



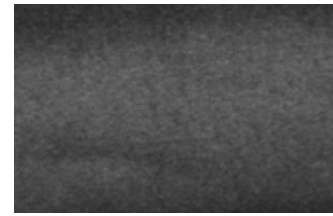
Baltimora 04



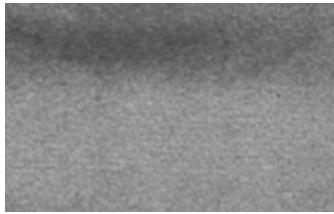
Baltimora 06



Baltimora 07



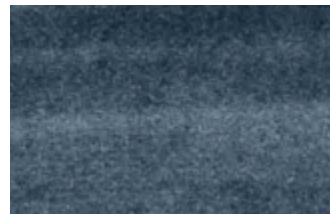
Baltimora 08



Baltimora 10



Baltimora 14



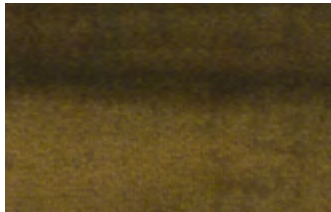
Baltimora 15



Baltimora 18



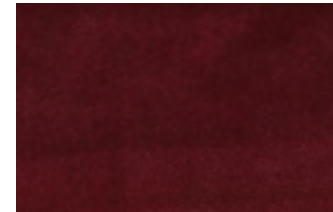
Baltimora 19



Baltimora 23



Baltimora 28



Baltimora 32

INFORMAZIONI TECNICHE

*Technical information - informations techniques -
technische Informationen*

Composizione

Composition 100% Poliestere
Composition-
Zusammensetzung

Altezza

Height 140 cm
Hauteur
Höhe

Peso

Weigh 300 gr/m² (+-5%)
Poids
Gewicht

Martindale 100.000

Martindale abrasion

Pilling 4/5

Resistance to pilling

CURA & MANUTENZIONE

*Care & Maintenance- Entretien et Maintenance -
Pflege & Wartung*



[APP »](#)

[BALI »](#)

[BALTIMORA »](#)

BON BON

[DREAM »](#)

[FRIDA »](#)

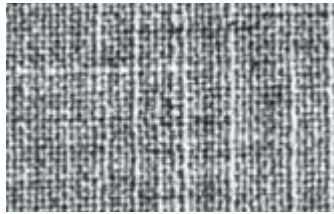
[MAIA »](#)

[MARTIN »](#)

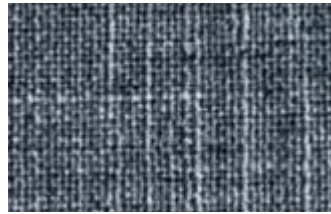
[ONTARIO »](#)

[STELLA »](#)

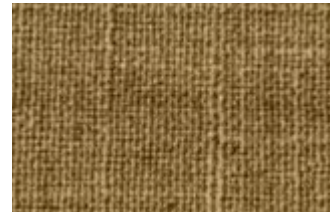
[TEKNOFIBRA »](#)



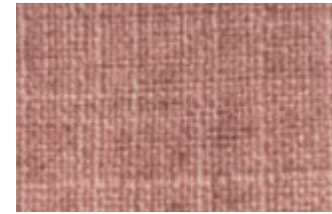
Bon Bon 06



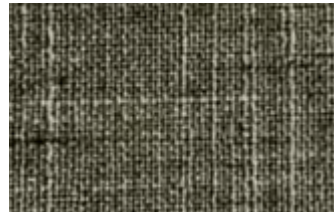
Bon Bon 15



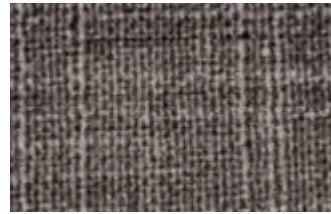
Bon Bon 20



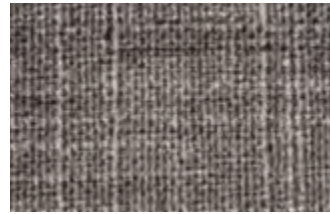
Bon Bon 35



Bon Bon 62



Bon Bon 74



Bon Bon 101



Bon Bon 104

INFORMAZIONI TECNICHE

*Technical information - informations techniques -
technische Informationen*

Composizione

Composition 100% Polyestere
Composition-
Zusammensetzung

Altezza

Height
Hauteur
Höhe

Peso

Weigh 420 gr/ml
Poids
Gewicht

Martindale 60.000

Martindale abrasion

Pilling

Resistance to pilling

CURA & MANUTENZIONE

*Care & Maintenance- Entretien et Maintenance -
Pflege & Wartung*



[APP »](#)

[BALI »](#)

[BALTIMORA »](#)

[BON BON »](#)

DREAM

[FRIDA »](#)

[MAIA »](#)

[MARTIN »](#)

[ONTARIO »](#)

[STELLA »](#)

[TEKNOFIBRA »](#)



Dream 01



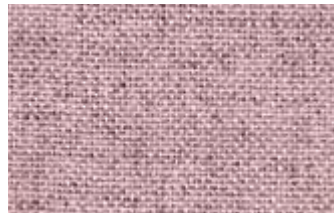
Dream 02



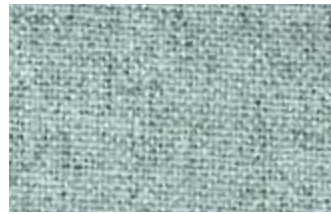
Dream 03



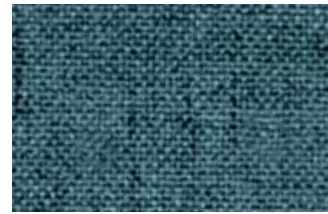
Dream 04



Dream 10



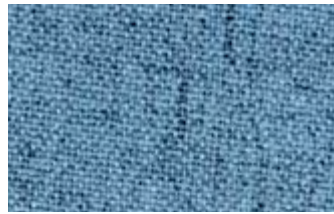
Dream 11



Dream 12



Dream 14



Dream 15



Dream 16



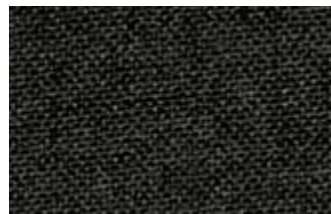
Dream 17



Dream 18



Dream 19



Dream 20

INFORMAZIONI TECNICHE

*Technical information - informations techniques -
technische Informationen*

Composizione

Composition 100% Polyestere
Composition-
Zusammensetzung

Altezza

Height 145 cm (+/- 2 cm)
Hauteur
Höhe

Peso

Weigh 406 g/m (+/- 5%)
Poids
Gewicht

Martindale > 45.000

Martindale abrasion

Pilling 4

Resistance to pilling

CURA & MANUTENZIONE

*Care & Maintenance- Entretien et Maintenance -
Pflege & Wartung*



[APP »](#)

[BALI »](#)

[BALTIMORA »](#)

[BON BON »](#)

[DREAM »](#)

FRIDA

[MAIA »](#)

[MARTIN »](#)

[ONTARIO »](#)

[STELLA »](#)

[TEKNOFIBRA »](#)



Frida 01



Frida 02



Frida 03



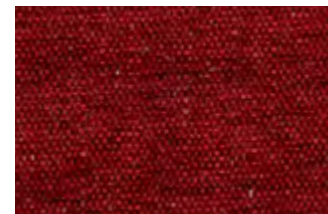
Frida 04



Frida 05



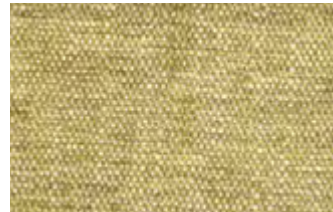
Frida 06



Frida 07



Frida 08



Frida 09



Frida 10



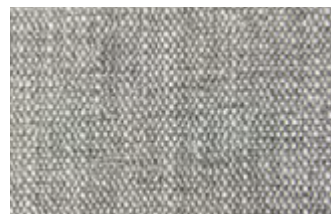
Frida 11



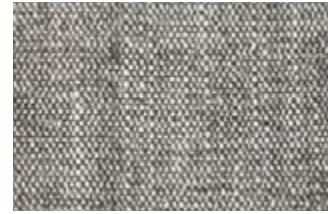
Frida 12



Frida 13



Frida 14



Frida 15



Frida 16



Frida 17

INFORMAZIONI TECNICHE

Technical information - informations techniques - technische Informationen

Composizione

Composition 70% PL - 30% LI
Composition- Zusammensetzung

Altezza

Height 140 cm
Hauteur
Höhe

Peso

Weigh 525 + - 5%gr/ml
Poids
Gewicht

Martindale 50.000

Martindale abrasion

Pilling

4/5

Resistance to pilling



Idrorepellente
Water repellent - Hydrofuge
Wasserabweisend

CURA & MANUTENZIONE

Care & Maintenance- Entretien et Maintenance - Pflege & Wartung



[APP »](#)

[BALI »](#)

[BALTIMORA »](#)

[BON BON »](#)

[DREAM »](#)

[FRIDA »](#)

MAIA

[MARTIN »](#)

[ONTARIO »](#)

[STELLA »](#)

[TEKNOFIBRA »](#)



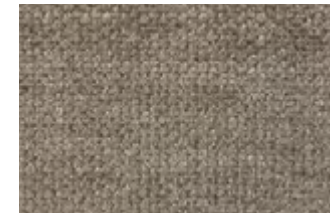
Maia 01



Maia 02



Maia 03



Maia 04



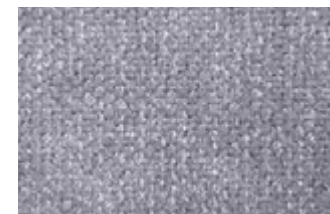
Maia 05



Maia 06



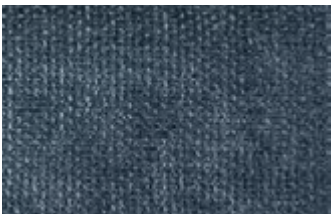
Maia 07



Maia 08



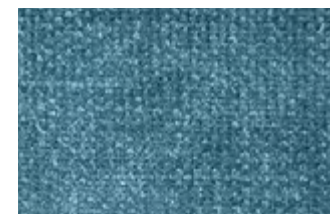
Maia 09



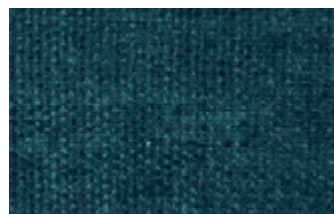
Maia 10



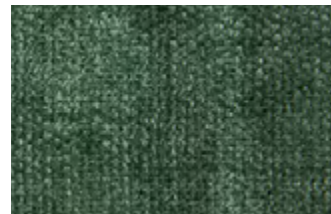
Maia 11



Maia 12



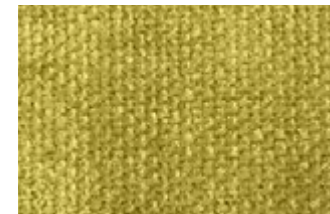
Maia 13



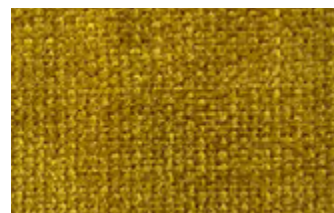
Maia 14



Maia 15



Maia 16



Maia 17



Maia 18



Maia 19



Maia 20

INFORMAZIONI TECNICHE

Technical information - informations techniques - technische Informationen

Composizione

Composition 100% PL
Composition-
Zusammensetzung

Altezza

Height 140 cm
Hauteur
Höhe

Peso

Weigh 410 ± 5% gr/mq
Poids
Gewicht

Martindale

Martindale abrasion >100000

Pilling

Resistance to pilling 4/5



Idrorepellente
Water repellent - Hydrofuge
Wasserabweisend



CURA & MANUTENZIONE

Care & Maintenance - Entretien et Maintenance - Pflege & Wartung



[APP »](#)

[BALI »](#)

[BALTIMORA »](#)

[BON BON »](#)

[DREAM »](#)

[FRIDA »](#)

MAIA

[MARTIN »](#)

[ONTARIO »](#)

[STELLA »](#)

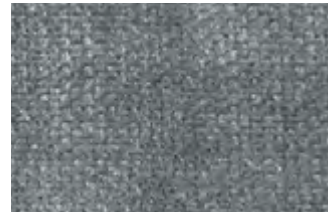
[TEKNOFIBRA »](#)



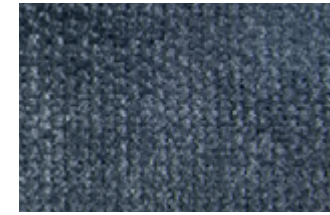
Maia 21



Maia 22



Maia 23



Maia 24



Maia 25



Maia 26

INFORMAZIONI TECNICHE

Technical information - informations techniques - technische Informationen

Composizione

Composition 100% PL
Composition-
Zusammensetzung

Altezza

Height 140 cm
Hauteur
Höhe

Peso

Weigh 410 ± 5% gr/mq
Poids
Gewicht

Martindale >100000

Martindale abrasion

Pilling 4/5

Resistance to pilling



Idrorepellente
Water repellent - Hydrofuge
Wasserabweisend



CURA & MANUTENZIONE

*Care & Maintenance- Entretien et Maintenance -
Pflege & Wartung*



[APP »](#)

[BALI »](#)

[BALTIMORA »](#)

[BON BON »](#)

[DREAM »](#)

[FRIDA »](#)

[MAIA »](#)

MARTIN

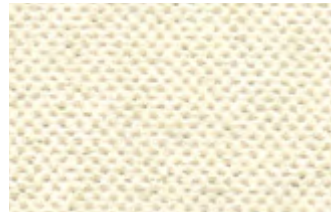
[ONTARIO »](#)

[STELLA »](#)

[TEKNOFIBRA »](#)



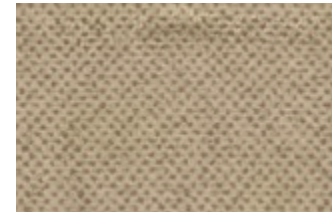
Martin 304



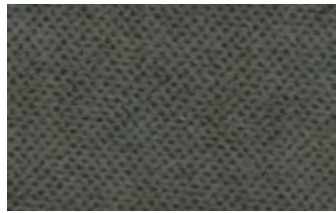
Martin 400



Martin 401



Martin 402



Martin 600



Martin 603



Martin 702



Martin 707

INFORMAZIONI TECNICHE

*Technical information - informations techniques -
technische Informationen*

Composizione

Composition 100% Polyestere
Composition-
Zusammensetzung

Altezza

Height
Hauteur
Höhe

Peso

Weigh 250 gr/ml
Poids
Gewicht

Martindale 25.000

Martindale abrasion

Pilling

Resistance to pilling

CURA & MANUTENZIONE

*Care & Maintenance- Entretien et Maintenance -
Pflege & Wartung*



[APP »](#)

[BALI »](#)

[BALTIMORA »](#)

[BON BON »](#)

[DREAM »](#)

[FRIDA »](#)

[MAIA »](#)

[MARTIN »](#)

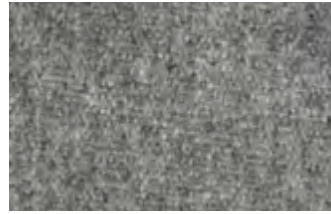
ONTARIO

[STELLA »](#)

[TEKNOFIBRA »](#)



Ontario 81



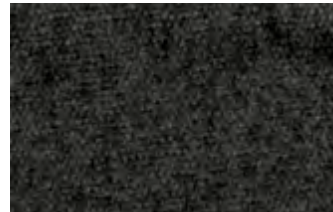
Ontario 91



Ontario 92



Ontario 94



Ontario 96

INFORMAZIONI TECNICHE

*Technical information - informations techniques -
technische Informationen*

Composizione

Composition 100% Polyestere
Composition-
Zusammensetzung

Altezza

Height
Hauteur
Höhe

Peso

Weigh 250 gr/ml
Poids
Gewicht

Martindale 25.000

Martindale abrasion

Pilling

Resistance to pilling

CURA & MANUTENZIONE

*Care & Maintenance- Entretien et Maintenance -
Pflege & Wartung*



[APP »](#)

[BALI »](#)

[BALTIMORA »](#)

[BON BON »](#)

[DREAM »](#)

[FRIDA »](#)

[MAIA »](#)

[MARTIN »](#)

[ONTARIO »](#)

STELLA

[TEKNOFIBRA »](#)



Stella 01



Stella 02



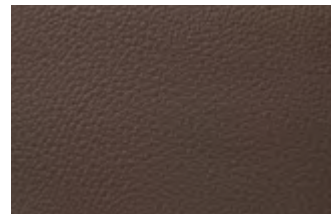
Stella 03



Stella 04



Stella 05



Stella 06



Stella 07



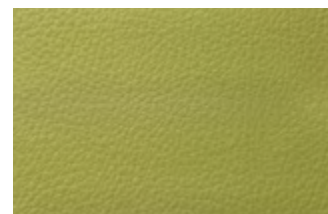
Stella 08



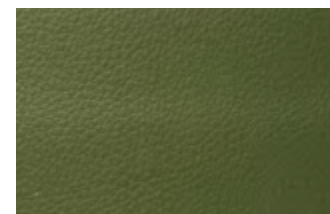
Stella 09



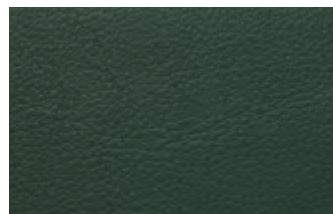
Stella 10



Stella 11



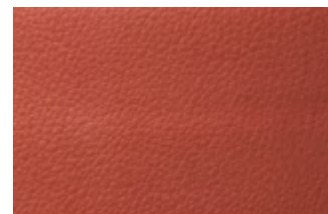
Stella 12



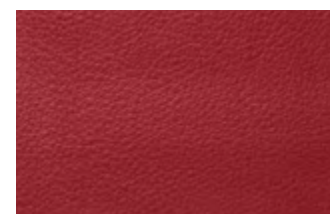
Stella 13



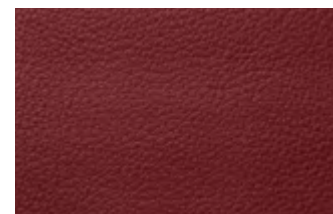
Stella 14



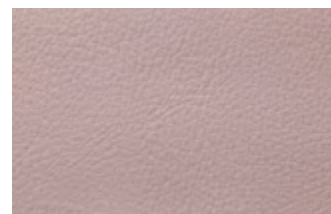
Stella 15



Stella 16



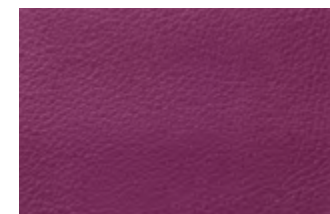
Stella 17



Stella 18



Stella 19



Stella 20

**INFORMAZIONI
TECNICHE**

*Technical information - informations techniques -
technische Informationen*

Composizione Superficie 72% (93%
Composition PVC - 7% PU)
Composition- Zusammensetzung Retro 28% PL

Altezza

Height 140 CM
Hauteur
Höhe

Peso

Weigh 580± 5% gr/mq
Poids
Gewicht

Martindale >100.000
Martindale abrasion

Pilling 5
Resistance to pilling



Idrorepellente
Water repellent - Hydrofuge
Wasserabweisend

CURA & MANUTENZIONE

*Care & Maintenance- Entretien et Maintenance -
Pflege & Wartung*



[APP »](#)

[BALI »](#)

[BALTIMORA »](#)

[BON BON »](#)

[DREAM »](#)

[FRIDA »](#)

[MAIA »](#)

[MARTIN »](#)

[ONTARIO »](#)

STELLA

[TEKNOFIBRA »](#)



Stella 21



Stella 22



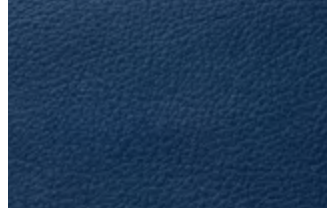
Stella 23



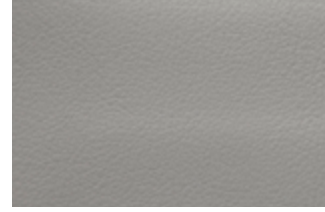
Stella 24



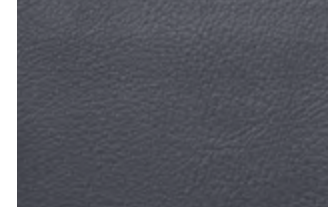
Stella 25



Stella 26



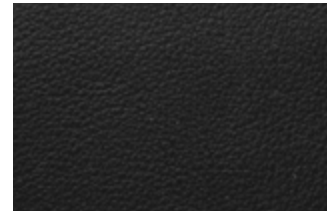
Stella 27



Stella 28



Stella 29



Stella 30

INFORMAZIONI TECNICHE

*Technical information - informations techniques -
technische Informationen*

Composizione Superficie 72% (93%
Composition PVC - 7% PU)
Composition- Retro 28% PL
Zusammensetzung

Altezza

Height 140 CM
Hauteur
Höhe

Peso

Weigh 580± 5% gr/mq
Poids
Gewicht

Martindale >100.000

Martindale abrasion

Pilling 5

Resistance to pilling



Idrorepellente
Water repellent - Hydrofuge
Wasserabweisend

CURA & MANUTENZIONE

*Care & Maintenance- Entretien et Maintenance -
Pflege & Wartung*



[APP »](#)

[BALI »](#)

[BALTIMORA »](#)

[BON BON »](#)

[DREAM »](#)

[FRIDA »](#)

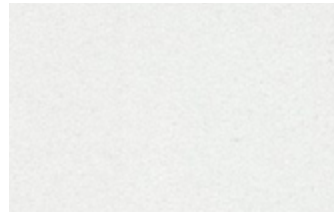
[MAIA »](#)

[MARTIN »](#)

[ONTARIO »](#)

[STELLA »](#)

TEKNOFIBRA



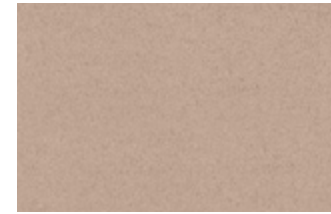
Teknofibra 01



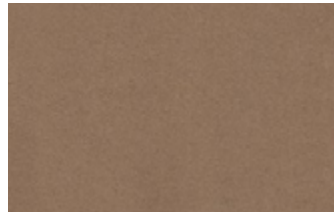
Teknofibra 02



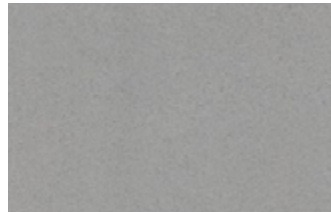
Teknofibra 03



Teknofibra 04



Teknofibra 05



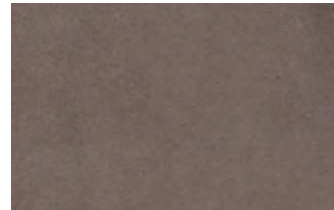
Teknofibra 06



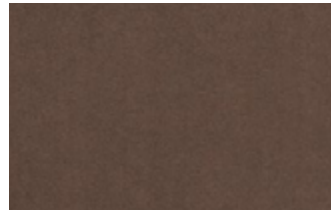
Teknofibra 07



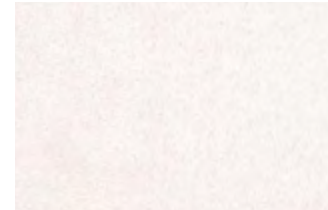
Teknofibra 08



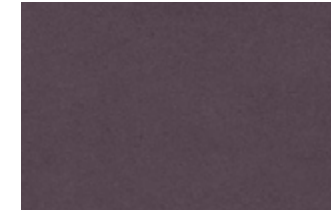
Teknofibra 10



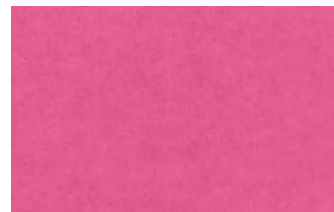
Teknofibra 11



Teknofibra 12



Teknofibra 14



Teknofibra 16



Teknofibra 17



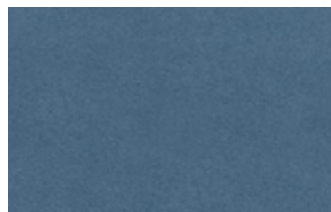
Teknofibra 18



Teknofibra 20



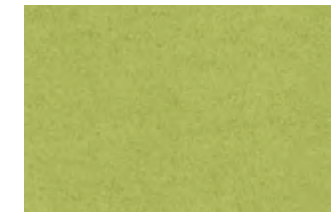
Teknofibra 21



Teknofibra 22



Teknofibra 24



Teknofibra 25

**INFORMAZIONI
TECNICHE**

*Technical information - informations techniques -
technische Informationen*

Composizione

Composition 100% Polyestere
Composition-
Zusammensetzung

Altezza

Height 140 cm
Hauteur
Höhe

Peso

Weight 550 +/- 5% gr/mq
Poids
Gewicht

Martindale

Martindale abrasion >50.000

Pilling

Resistance to pilling 4/5



Pulizia facile
con acqua

Easy water cleaning - Nettoyage facile à l'eau - Einfache
reinigung mit wasser



CURA & MANUTENZIONE

Care & Maintenance - Entretien et Maintenance -
Pflege & Wartung



>50.000

[APP »](#)

[BALI »](#)

[BALTIMORA »](#)

[BON BON »](#)

[DREAM »](#)

[FRIDA »](#)

[MAIA »](#)

[MARTIN »](#)

[ONTARIO »](#)

[STELLA »](#)

TEKNOFIBRA



Teknofibra 26



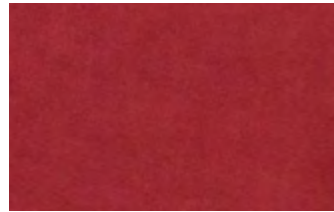
Teknofibra 27



Teknofibra 28



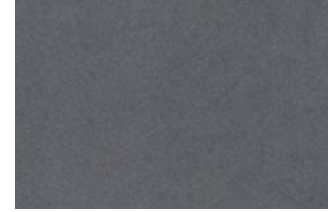
Teknofibra 30



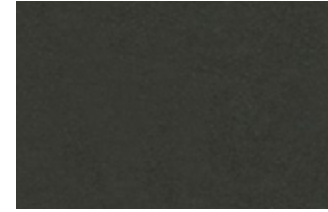
Teknofibra 31



Teknofibra 32



Teknofibra 33



Teknofibra 34

INFORMAZIONI TECNICHE

*Technical information - informations techniques -
technische Informationen*

Composizione

Composition 100% Polyestere
Composition- 100% Polyestere
Zusammensetzung

Altezza

Height 140 cm
Hauteur
Höhe

Peso

Weigh 550 +/- 5% gr/mq
Poids
Gewicht

Martindale

Martindale abrasion >50.000

Pilling

Resistance to pilling 4/5



Pulizia facile
con acqua

Easy water cleaning - Nettoyage facile à l'eau - Einfache
reinigung mit wasser



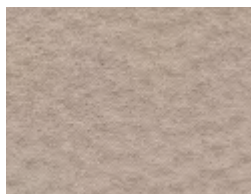
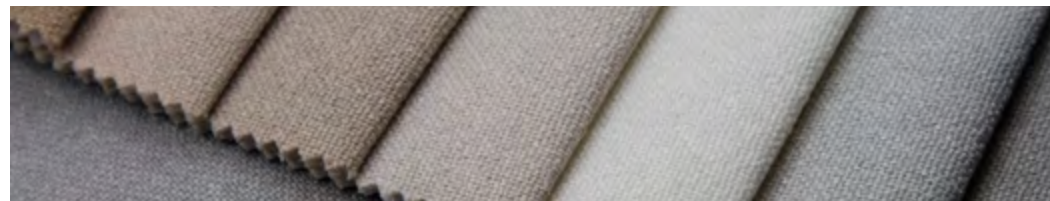
CURA & MANUTENZIONE

*Care & Maintenance- Entretien et Maintenance -
Pflege & Wartung*



TESSUTO

Fabric - Tissu - Stoffe



CANBERRA »



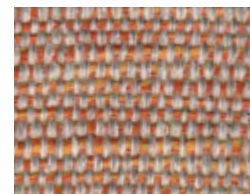
CARACAS »



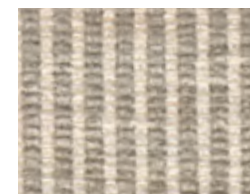
COCÒ »



COMO »



COPACABANA »



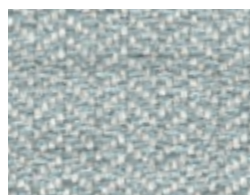
DALÌ »



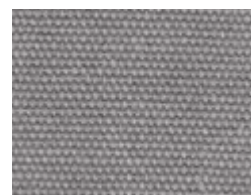
LIMA »



LORY »



MONET »



RIO »



SMACK »



SPOLETO »



TIP TAP »



VAN GOGH »

CANBERRA

[CARACAS »](#)

[COCÒ »](#)

[COMO »](#)

[COPACABANA »](#)

[DALÌ »](#)

[LIMA »](#)

[LORY »](#)

[MONET »](#)

[RIO »](#)

[SMACK »](#)

[SPOLETO »](#)

[TIP TAP »](#)

[VAN GOGH »](#)



Canberra 9502



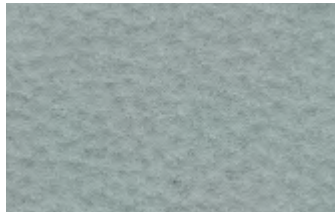
Canberra 9611



Canberra 9811



Canberra 9852



Canberra 9909



Canberra 9981

**INFORMAZIONI
TECNICHE**

*Technical information - informations techniques -
technische Informationen*

Composizione

Composition 100% Polyestere
Composition-
Zusammensetzung

Altezza

Height 140 cm
Hauteur
Höhe

Peso

Weigh 550 ± 5% gr/mq
Poids
Gewicht

Martindale 35.000

Martindale abrasion

Pilling 4/5

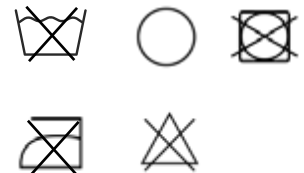
Resistance to pilling



Idrorepellente
Water repellent - Hydrofuge
Wasserabweisend

CURA & MANUTENZIONE

*Care & Maintenance- Entretien et Maintenance -
Pflege & Wartung*



[CANBERRA »](#)

CARACAS

[COCÒ »](#)

[COMO »](#)

[COPACABANA »](#)

[DALÌ »](#)

[LIMA »](#)

[LORY »](#)

[MONET »](#)

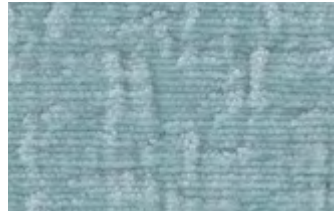
[RIO »](#)

[SMACK »](#)

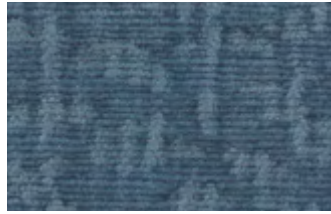
[SPOLETO »](#)

[TIP TAP »](#)

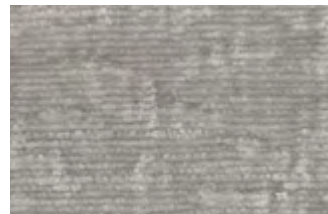
[VAN GOGH »](#)



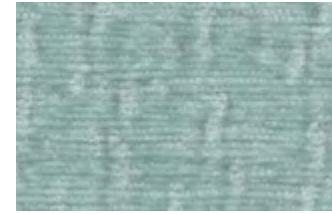
Caracas 13



Caracas 15



Caracas 27



Caracas 42



Caracas 60



Caracas 84



Caracas 94

INFORMAZIONI TECNICHE

*Technical information - informations techniques -
technische Informationen*

Composizione

Composition 100% PL
Composition-
Zusammensetzung

Altezza

Height
Hauteur
Höhe

Peso

Weigh 650 gr/ml
Poids
Gewicht

Martindale 40.000

Martindale abrasion

Pilling

Resistance to pilling

CURA & MANUTENZIONE

*Care & Maintenance- Entretien et Maintenance -
Pflege & Wartung*



[CANBERRA »](#)

[CARACAS »](#)

COCÒ

[COMO »](#)

[COPACABANA »](#)

[DALÌ »](#)

[LIMA »](#)

[LORY »](#)

[MONET »](#)

[RIO »](#)

[SMACK »](#)

[SPOLETO »](#)

[TIP TAP »](#)

[VAN GOGH »](#)



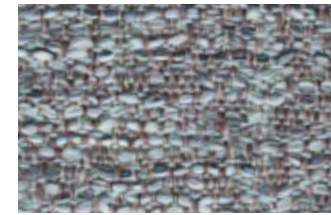
Cocò 100



Cocò 301



Cocò 600



Cocò 700



Cocò 701

INFORMAZIONI TECNICHE

*Technical information - informations techniques -
technische Informationen*

Composizione

Composition 100% cotone
Composition-
Zusammensetzung

Altezza

Height
Hauteur
Höhe

Peso

Weigh 560 gr/mq
Poids
Gewicht

Martindale 25.000

Martindale abrasion

Pilling

Resistance to pilling

CURA & MANUTENZIONE

*Care & Maintenance - Entretien et Maintenance -
Pflege & Wartung*



[CANBERRA »](#)

[CARACAS »](#)

[COCÒ »](#)

COMO

[COPACABANA »](#)

[DALÌ »](#)

[LIMA »](#)

[LORY »](#)

[MONET »](#)

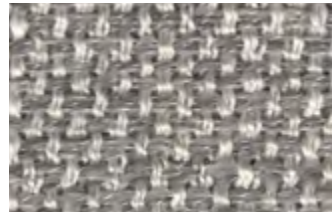
[RIO »](#)

[SMACK »](#)

[SPOLETO »](#)

[TIP TAP »](#)

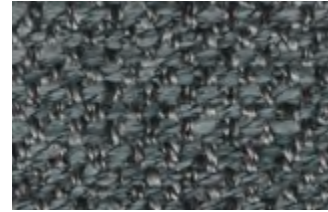
[VAN GOGH »](#)



Como 02



Como 05



Como 14



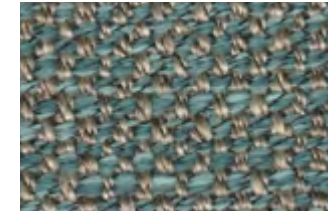
Como 16



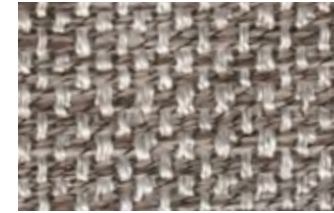
Como 17



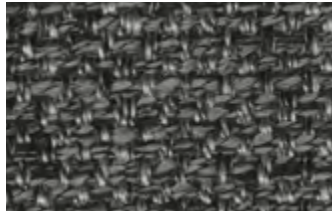
Como 20



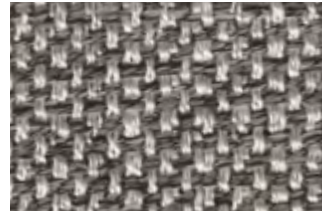
Como 21



Como 130



Como 205



Como 622

INFORMAZIONI TECNICHE

*Technical information - informations techniques -
technische Informationen*

Composizione 70% poliestere -
Composition 30% acrilico
*Composition-
Zusammensetzung*

Altezza

*Height
Hauteur
Höhe*

Peso

*Weigh
Poids
Gewicht* 670 gr/mq

Martindale

Martindale abrasion

Pilling

Resistance to pilling

CURA & MANUTENZIONE

*Care & Maintenance- Entretien et Maintenance -
Pflege & Wartung*



[CANBERRA »](#)

[CARACAS »](#)

[COCÒ »](#)

[COMO »](#)

COPACABANA

[DALÌ »](#)

[LIMA »](#)

[LORY »](#)

[MONET »](#)

[RIO »](#)

[SMACK »](#)

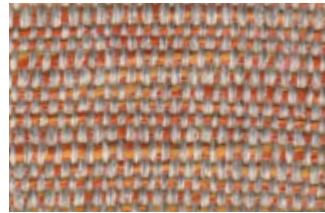
[SPOLETO »](#)

[TIP TAP »](#)

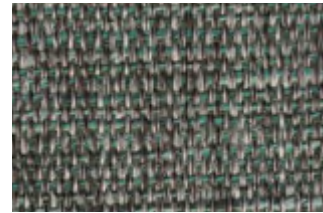
[VAN GOGH »](#)



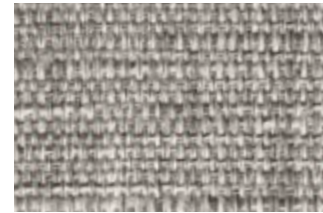
Copacabana 02



Copacabana 08



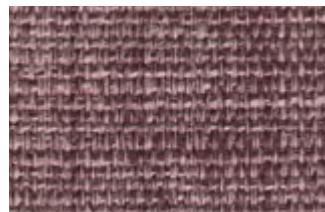
Copacabana 16



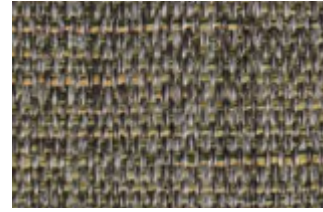
Copacabana 17



Copacabana 21



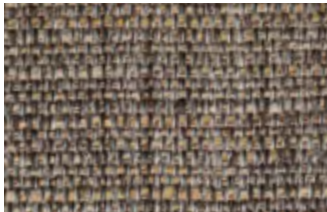
Copacabana 22



Copacabana 24



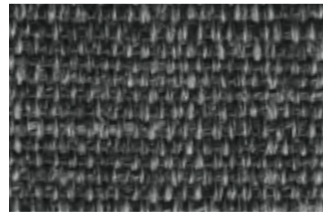
Copacabana 26



Copacabana 103



Copacabana 105



Copacabana 205

INFORMAZIONI TECNICHE

*Technical information - informations techniques -
technische Informationen*

Composizione 58% poliestere -
Composition 42% acetato
*Composition-
Zusammensetzung*

Altezza

*Height
Hauteur
Höhe*

Peso

*Weigh
Poids
Gewicht* 490 gr/mq

Martindale

Martindale abrasion

Pilling

Resistance to pilling

CURA & MANUTENZIONE

*Care & Maintenance- Entretien et Maintenance -
Pflege & Wartung*



[CANBERRA »](#)

[CARACAS »](#)

[COCÒ »](#)

[COMO »](#)

[COPACABANA »](#)

DALÌ

[LIMA »](#)

[LORY »](#)

[MONET »](#)

[RIO »](#)

[SMACK »](#)

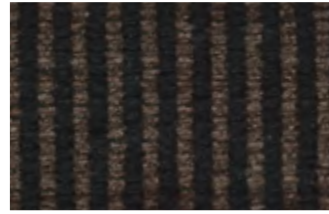
[SPOLETO »](#)

[TIP TAP »](#)

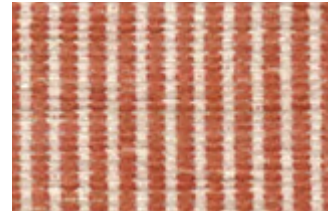
[VAN GOGH »](#)



Dalì 05



Dalì 07



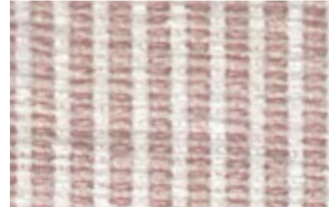
Dalì 08



Dalì 15



Dalì 47



Dalì 801



Dalì 802



Dalì 803

INFORMAZIONI TECNICHE

*Technical information - informations techniques -
technische Informationen*

Composizione	
Composition	60% CO/
Composition- Zusammensetzung	40% PC

Altezza	
Height	140 cm
Hauteu	
Höhe	

Peso	
Weigh	540 g/ml
Poids	
Gewicht	

Martindale	50.000
Martindale abrasion	

Pilling	
Resistance to pilling	

CURA & MANUTENZIONE

*Care & Maintenance- Entretien et Maintenance -
Pflege & Wartung*



[CANBERRA »](#)

[CARACAS »](#)

[COCÒ »](#)

[COMO »](#)

[COPACABANA »](#)

[DALÌ »](#)

LIMA

[LORY »](#)

[MONET »](#)

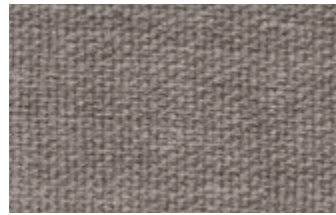
[RIO »](#)

[SMACK »](#)

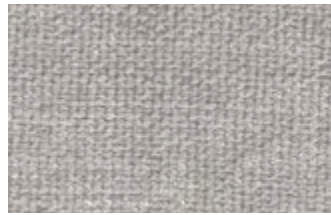
[SPOLETO »](#)

[TIP TAP »](#)

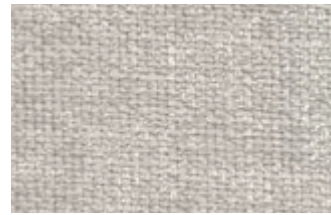
[VAN GOGH »](#)



Lima 01



Lima 02



Lima 03



Lima 04



Lima 05



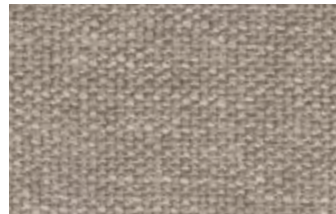
Lima 06



Lima 07



Lima 08



Lima 09



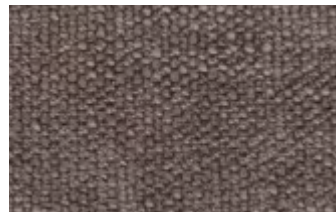
Lima 10



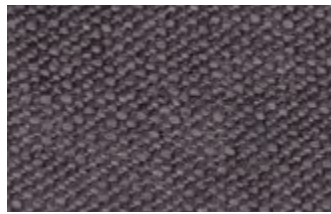
Lima 11



Lima 12



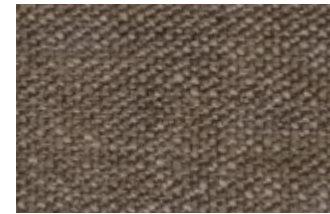
Lima 13



Lima 14



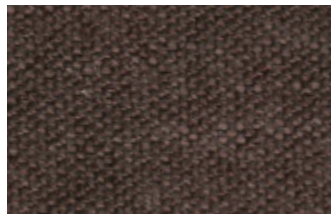
Lima 15



Lima 16



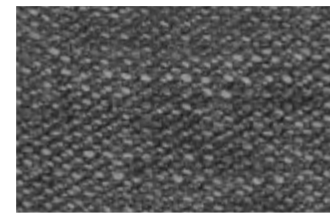
Lima 17



Lima 18



Lima 19



Lima 20

INFORMAZIONI TECNICHE

Technical information - informations techniques - technische Informationen

Composizione
Composition 90% PL -
Composition- 10% Rayon
Zusammensetzung

Altezza

Height
Hauteur
Höhe

Peso

Weigh 650 gr
Poids
Gewicht

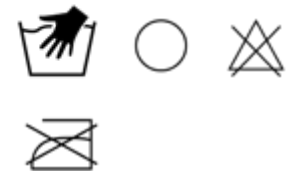
Martindale >40.000
Martindale abrasion

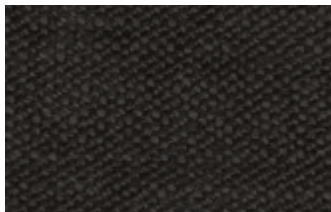
Pilling

Resistance to pilling

CURA & MANUTENZIONE

Care & Maintenance - Entretien et Maintenance - Pflege & Wartung





Lima 21

[CANBERRA »](#)

[CARACAS »](#)

[COCÒ »](#)

[COMO »](#)

[COPACABANA »](#)

[DALÌ »](#)

LIMA

[LORY »](#)

[MONET »](#)

[RIO »](#)

[SMACK »](#)

[SPOLETO »](#)

[TIP TAP »](#)

[VAN GOGH »](#)

◀ Home

INFORMAZIONI TECNICHE

*Technical information - informations techniques -
technische Informationen*

Composizione

Composition 90% PL -
Composition- 10% Rayon
Zusammensetzung

Altezza

Height
Hauteur
Höhe

Peso

Weigh 650 gr
Poids
Gewicht

Martindale

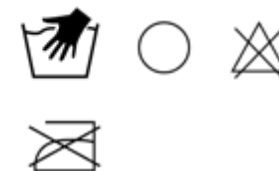
Martindale abrasion >40.000

Pilling

Resistance to pilling

CURA & MANUTENZIONE

*Care & Maintenance- Entretien et Maintenance -
Pflege & Wartung*



[CANBERRA »](#)

[CARACAS »](#)

[COCÒ »](#)

[COMO »](#)

[COPACABANA »](#)

[DALÌ »](#)

[LIMA »](#)

LORY

[MONET »](#)

[RIO »](#)

[SMACK »](#)

[SPOLETO »](#)

[TIP TAP »](#)

[VAN GOGH »](#)



Lory 28



Lory 39



Lory 46



Lory 47



Lory 160

INFORMAZIONI TECNICHE

*Technical information - informations techniques -
technische Informationen*

Composizione	80% CO,
<i>Composition</i>	20% PC
<i>Composition- Zusammensetzung</i>	

Altezza	140/145 cm
<i>Height</i>	
<i>Hauteur</i>	
<i>Höhe</i>	

Peso	650 g/ml
<i>Weigh</i>	
<i>Poids</i>	
<i>Gewicht</i>	

Martindale	40.000
<i>Martindale abrasion</i>	

Pilling	4/5
<i>Resistance to pilling</i>	

CURA & MANUTENZIONE

*Care & Maintenance- Entretien et Maintenance -
Pflege & Wartung*



[CANBERRA »](#)

[CARACAS »](#)

[COCÒ »](#)

[COMO »](#)

[COPACABANA »](#)

[DALÌ »](#)

[LIMA »](#)

[LORY »](#)

MONET

[RIO »](#)

[SMACK »](#)

[SPOLETO »](#)

[TIP TAP »](#)

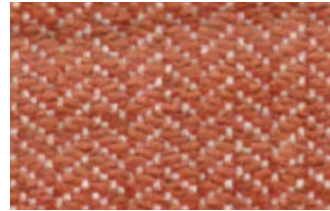
[VAN GOGH »](#)



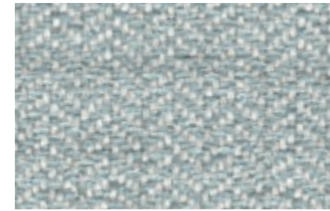
Monet 08



Monet 15



Monet 800



Monet 801



Monet 802

INFORMAZIONI TECNICHE

*Technical information - informations techniques -
technische Informationen*

Composizione

Composition 90% PL - 10%
Composition- Rayon
Zusammensetzung

Altezza

Height
Hauteur
Höhe

Peso

Weigh 650 gr
Poids
Gewicht

Martindale

Martindale abrasion >40.000

Pilling

Resistance to pilling

CURA & MANUTENZIONE

*Care & Maintenance- Entretien et Maintenance -
Pflege & Wartung*



[CANBERRA »](#)

[CARACAS »](#)

[COCÒ »](#)

[COMO »](#)

[COPACABANA »](#)

[DALÌ »](#)

[LIMA »](#)

[LORY »](#)

[MONET »](#)

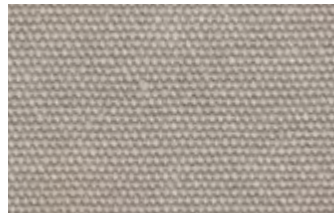
RIO

[SMACK »](#)

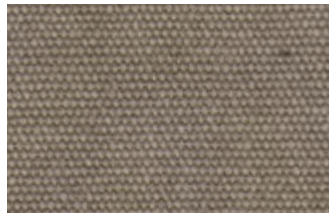
[SPOLETO »](#)

[TIP TAP »](#)

[VAN GOGH »](#)



Rio 01



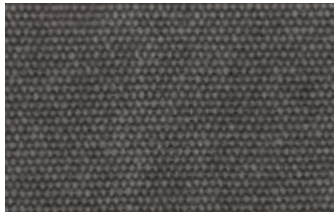
Rio 03



Rio 11



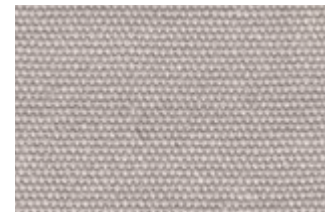
Rio 13



Rio 14



Rio 17



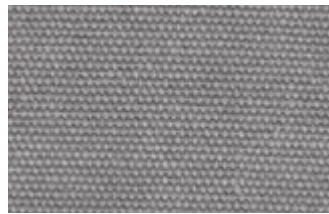
Rio 34



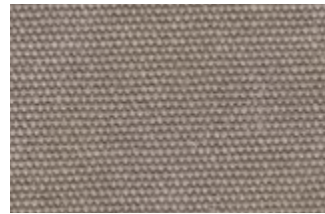
Rio 84



Rio 606



Rio 804



Rio 806

INFORMAZIONI TECNICHE

*Technical information - informations techniques -
technische Informationen*

Composizione

Composition 85% Cotton /
Composition- 15% Polyester
Zusammensetzung

Altezza

Height 142 cm (+/- 2 cm)
Hauteur
Höhe

Peso

Weigh 680 g/m (+/- 5%)
Poids
Gewicht

Martindale

Martindale abrasion 43 000

Pilling

Resistance to pilling 4

CURA & MANUTENZIONE

*Care & Maintenance- Entretien et Maintenance -
Pflege & Wartung*



[CANBERRA »](#)

[CARACAS »](#)

[COCÒ »](#)

[COMO »](#)

[COPACABANA »](#)

[DALÌ »](#)

[LIMA »](#)

[LORY »](#)

[MONET »](#)

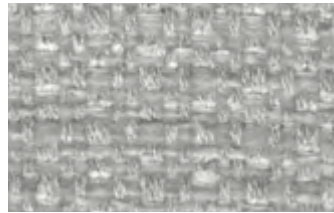
[RIO »](#)

SMACK

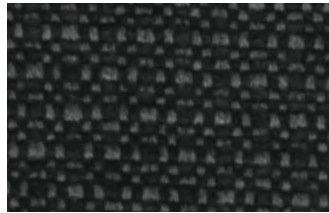
[SPOLETO »](#)

[TIP TAP »](#)

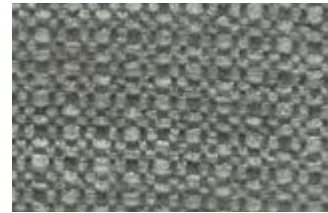
[VAN GOGH »](#)



Smack 37



Smack 500



Smack 501



Smack 800

INFORMAZIONI TECNICHE

*Technical information - informations techniques -
technische Informationen*

Composizione	
<i>Composition</i>	50% CO/
<i>Composition- Zusammensetzung</i>	50% PC

Altezza	
<i>Height</i>	140 cm
<i>Hauteur</i>	
<i>Höhe</i>	

Peso	
<i>Weigh</i>	670 g/ml
<i>Poids</i>	
<i>Gewicht</i>	

Martindale	35 000
<i>Martindale abrasion</i>	

Pilling	
<i>Resistance to pilling</i>	

CURA & MANUTENZIONE

*Care & Maintenance- Entretien et Maintenance -
Pflege & Wartung*



[CANBERRA »](#)

[CARACAS »](#)

[COCÒ »](#)

[COMO »](#)

[COPACABANA »](#)

[DALÌ »](#)

[LIMA »](#)

[LORY »](#)

[MONET »](#)

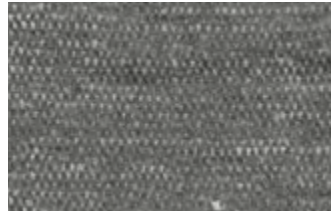
[RIO »](#)

[SMACK »](#)

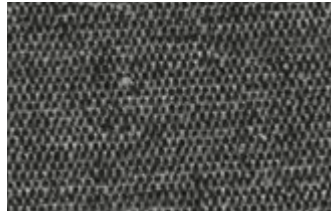
SPOLETO

[TIP TAP »](#)

[VAN GOGH »](#)



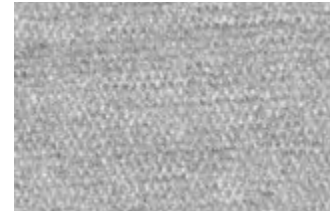
Spoletto 05



Spoletto 07



Spoletto 15



Spoletto 37



Spoletto 39



Spoletto 47

**INFORMAZIONI
 TECNICHE**

*Technical information - informations techniques -
 technische Informationen*

Composizione	
Composition	64% CO/
Composition- Zusammensetzung	36% PC

Altezza	
Height	140 cm
Hauteur	
Höhe	

Peso	
Weigh	535 g/ml
Poids	
Gewicht	

Martindale	55 000
Martindale abrasion	

Pilling	
Resistance to pilling	

CURA & MANUTENZIONE

*Care & Maintenance- Entretien et Maintenance -
 Pflege & Wartung*



[CANBERRA »](#)

[CARACAS »](#)

[COCÒ »](#)

[COMO »](#)

[COPACABANA »](#)

[DALÌ »](#)

[LIMA »](#)

[LORY »](#)

[MONET »](#)

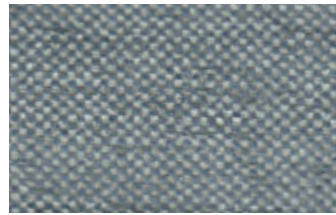
[RIO »](#)

[SMACK »](#)

[SPOLETO »](#)

TIP TAP

[VAN GOGH »](#)



Tip Tap 02



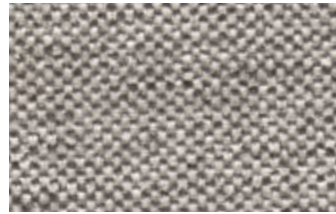
Tip Tap 08



Tip Tap 28



Tip Tap 39



Tip Tap 47



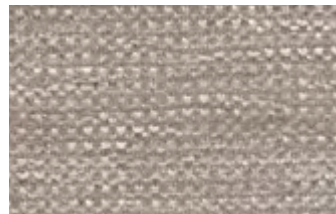
Tip Tap 174



Tip Tap 175



Tip Tap 370



Tip Tap 391



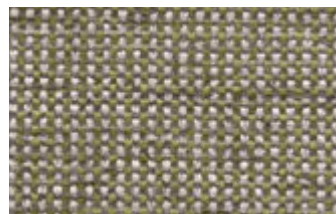
Tip Tap 460



Tip Tap 470



Tip Tap 471



Tip Tap 472



Tip Tap 501



Tip Tap 700



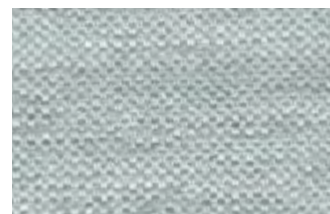
Tip Tap 801



Tip Tap 805



Tip Tap 806



Tip Tap 808



Tip Tap 809

**INFORMAZIONI
TECNICHE**

*Technical information - informations techniques -
technische Informationen*

Composizione
Composition 60% CO/
Composition- 40% PC
Zusammensetzung

Altezza
Height 140 cm
Hauteur
Höhe

Peso
Weigh 540 g/ml
Poids
Gewicht

Martindale 50.000
Martindale abrasion

Pilling
Resistance to pilling

CURA & MANUTENZIONE

*Care & Maintenance- Entretien et Maintenance -
Pflege & Wartung*



[CANBERRA »](#)

[CARACAS »](#)

[COCÒ »](#)

[COMO »](#)

[COPACABANA »](#)

[DALÌ »](#)

[LIMA »](#)

[LORY »](#)

[MONET »](#)

[RIO »](#)

[SMACK »](#)

[SPOLETO »](#)

[TIP TAP »](#)

VAN GOGH



Van Gogh 05



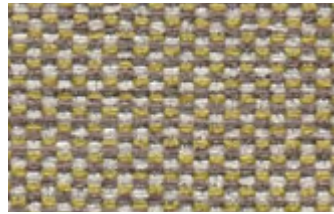
Van Gogh 08



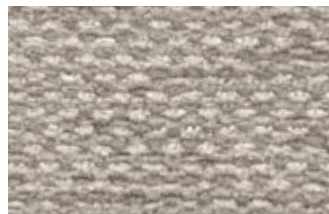
Van Gogh 15



Van Gogh 39



Van Gogh 57



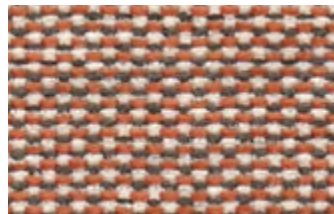
Van Gogh 390



Van Gogh 800



Van Gogh 801



Van Gogh 802

INFORMAZIONI TECNICHE

*Technical information - informations techniques -
technische Informationen*

Composizione	
Composition	60% CO/
Composition- Zusammensetzung	40% PC

Altezza	
Height Hauteur Höhe	140 cm

Peso	
Weigh Poids Gewicht	540 g/ml

Martindale	50.000
Martindale abrasion	

Pilling	
Resistance to pilling	

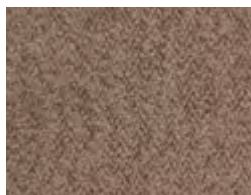
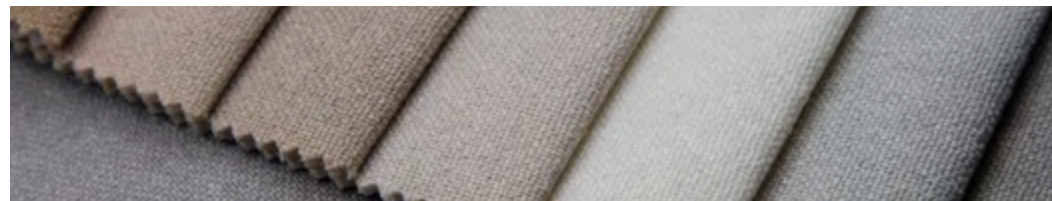
CURA & MANUTENZIONE

*Care & Maintenance- Entretien et Maintenance -
Pflege & Wartung*

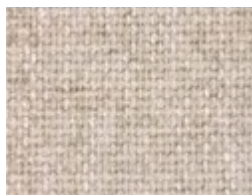


TESSUTO

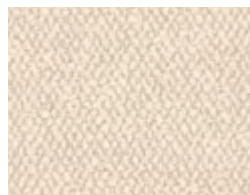
Fabric - Tissu - Stoffe



BAHIA »



BAKU »



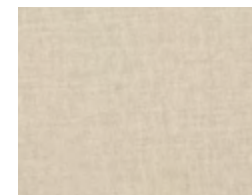
BANGKOK »



BARCELLONA »



BASILEA »



BASTIA »



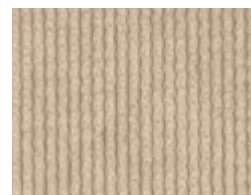
BELFAST »



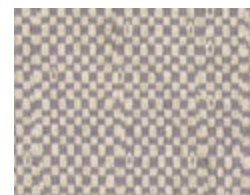
BELLAGIO »



BERNA »



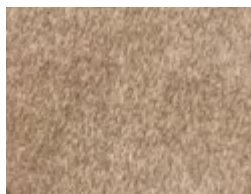
BILBAO »



BOLOGNA »



BONIFACIO »



BOSTON »



BRUXELLS »



BUCHAREST »



BUENOS AIRES »

Bag

BAHIA

[BAKU »](#)

[BANGKOK »](#)

[BARCELLONA »](#)

[BASILEA »](#)

[BASTIA »](#)

[BELFAST »](#)

[BELLAGIO »](#)

[BERNA »](#)

[BILBAO »](#)

[BOLOGNA »](#)

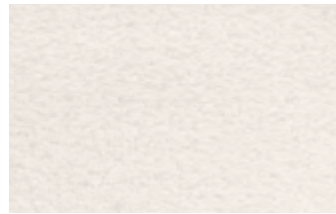
[BONIFACIO »](#)

[BOSTON »](#)

[BRUXELLS »](#)

[BUCHAREST »](#)

[BUENOS AIRES »](#)



Bahia 01



Bahia 03



Bahia 05



Bahia 06



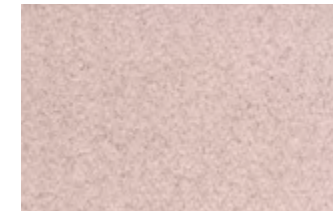
Bahia 09



Bahia 11



Bahia 16



Bahia 21

INFORMAZIONI TECNICHE

Technical information - informations techniques - technische Informationen

Composizione

Composition 100% PES
Composition-
Zusammensetzung

Altezza

Height 142 cm +/- 2 cm
Hauteur
Höhe

Peso

Weigh 550 g/m2
Poids
Gewicht

Martindale

Martindale abrasion >100 000

Pilling

Resistance to pilling 4/5



CURA & MANUTENZIONE

Care & Maintenance- Entretien et Maintenance - Pflege & Wartung



[BAHIA »](#)

BAKU

[BANGKOK »](#)

[BARCELLONA »](#)

[BASILEA »](#)

[BASTIA »](#)

[BELFAST »](#)

[BELLAGIO »](#)

[BERNA »](#)

[BILBAO »](#)

[BOLOGNA »](#)

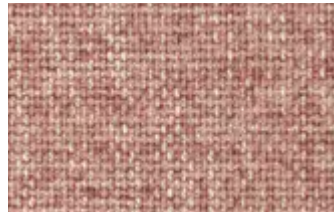
[BONIFACIO »](#)

[BOSTON »](#)

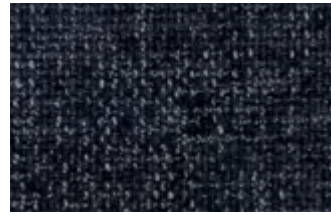
[BRUXELLS »](#)

[BUCHAREST »](#)

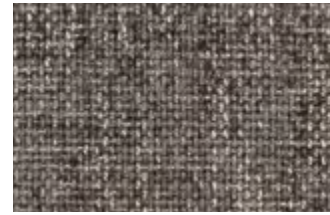
[BUENOS AIRES »](#)



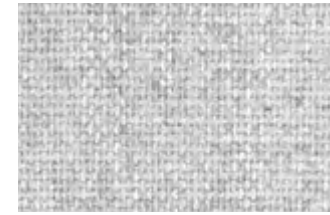
Baku 02



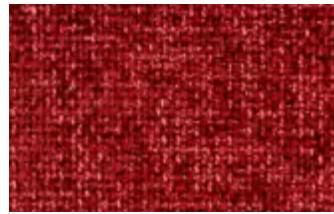
Baku 04



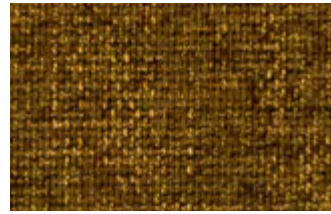
Baku 08



Baku 10



Baku 11



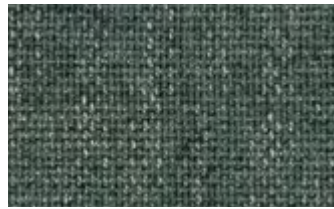
Baku 14



Baku 15



Baku 16



Baku 17



Baku 18



Baku 21

INFORMAZIONI TECNICHE

Technical information - informations techniques - technische Informationen

Composizione

Composition 100% PES
Composition-
Zusammensetzung

Altezza

Height 140 +/- 2 cm
Hauteur
Höhe

Peso

Weigh 500 g/m2
Poids
Gewicht

Martindale

Martindale abrasion >100 000

Pilling

Resistance to pilling 4/5

CURA & MANUTENZIONE

*Care & Maintenance- Entretien et Maintenance -
Pflege & Wartung*



[BAHIA »](#)

[BAKU »](#)

BANGKOK

[BARCELLONA »](#)

[BASILEA »](#)

[BASTIA »](#)

[BELFAST »](#)

[BELLAGIO »](#)

[BERNA »](#)

[BILBAO »](#)

[BOLOGNA »](#)

[BONIFACIO »](#)

[BOSTON »](#)

[BRUXELLS »](#)

[BUCHAREST »](#)

[BUENOS AIRES »](#)



Bangkok 01



Bangkok 05



Bangkok 20



Bangkok 70

INFORMAZIONI TECNICHE

*Technical information - informations techniques -
technische Informationen*

Composizione

Composition 100% Polyester
Composition-
Zusammensetzung

Altezza

Height min. 140cm
Hauteur
Höhe

Peso

Weigh 520g/m² +/-5%
Poids
Gewicht

Martindale

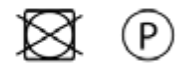
Martindale abrasion >100000

Pilling

Resistance to pilling 4

CURA & MANUTENZIONE

*Care & Maintenance- Entretien et Maintenance -
Pflege & Wartung*



[BAHIA »](#)

[BAKU »](#)

[BANGKOK »](#)

BARCELLONA

[BASILEA »](#)

[BASTIA »](#)

[BELFAST »](#)

[BELLAGIO »](#)

[BERNA »](#)

[BILBAO »](#)

[BOLOGNA »](#)

[BONIFACIO »](#)

[BOSTON »](#)

[BRUXELLS »](#)

[BUCHAREST »](#)

[BUENOS AIRES »](#)



Barcellona 01



Barcellona 02



Barcellona 10



Barcellona 19



Barcellona 21



Barcellona 23



Barcellona 27



Barcellona 80



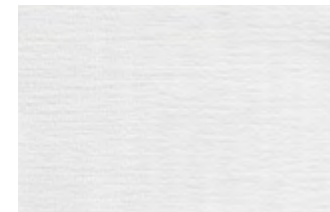
Barcellona 100



Barcellona 107



Barcellona 130



Barcellona 200



Barcellona 615

**INFORMAZIONI
TECNICHE**

*Technical information - informations techniques -
technische Informationen*

Composizione
Composition 100% PL
Composition-
Zusammensetzung

Altezza
Height >=140 cm
Hauteur
Höhe

Peso
Weigh 400 g/m2
Poids
Gewicht

Martindale 50000
Martindale abrasion

Pilling 4
Resistance to pilling

CURA & MANUTENZIONE

*Care & Maintenance- Entretien et Maintenance -
Pflege & Wartung*



[BAHIA »](#)

[BAKU »](#)

[BANGKOK »](#)

[BARCELLONA »](#)

BASILEA

[BASTIA »](#)

[BELFAST »](#)

[BELLAGIO »](#)

[BERNA »](#)

[BILBAO »](#)

[BOLOGNA »](#)

[BONIFACIO »](#)

[BOSTON »](#)

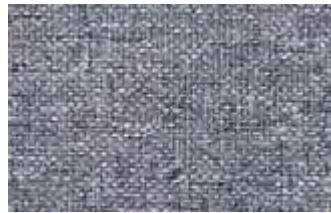
[BRUXELLS »](#)

[BUCHAREST »](#)

[BUENOS AIRES »](#)



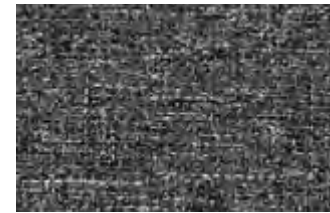
Basilea 05



Basilea 14



Basilea 18



Basilea 22



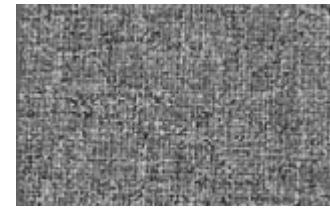
Basilea 28



Basilea 29



Basilea 30



Basilea 32



Basilea 34



Basilea 35



Basilea 45



Basilea 74

INFORMAZIONI TECNICHE

*Technical information - informations techniques -
technische Informationen*

Composizione

Composition 100% PL
Composition-
Zusammensetzung

Altezza

Height 140 cm
Hauteur
Höhe

Peso

Weigh 440±5% g/m
Poids
Gewicht

Martindale

Martindale abrasion ≥50.000

Pilling

Resistance to pilling 4

CURA & MANUTENZIONE

*Care & Maintenance- Entretien et Maintenance -
Pflege & Wartung*



[BAHIA »](#)

[BAKU »](#)

[BANGKOK »](#)

[BARCELLONA »](#)

[BASILEA »](#)

BASTIA

[BELFAST »](#)

[BELLAGIO »](#)

[BERNA »](#)

[BILBAO »](#)

[BOLOGNA »](#)

[BONIFACIO »](#)

[BOSTON »](#)

[BRUXELLS »](#)

[BUCHAREST »](#)

[BUENOS AIRES »](#)



Bastia 02



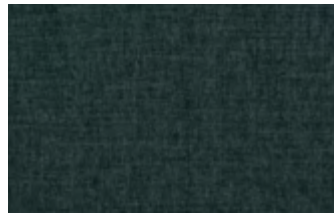
Bastia 03



Bastia 05



Bastia 07



Bastia 08



Bastia 10



Bastia 12



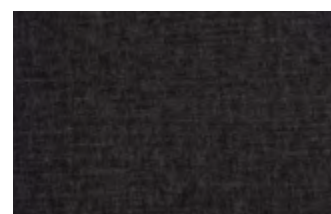
Bastia 17



Bastia 20



Bastia 21



Bastia 22

INFORMAZIONI TECNICHE

Technical information - informations techniques - technische Informationen


Composizione
Composition 100% Polyester
Composition-Zusammensetzung

Altezza
Height 140 cm ± 2 cm
Hauteur
Höhe

Peso
Weigh 350 g/m² ± 3%
Poids
Gewicht

Martindale 45 000
Martindale abrasion

Pilling 4/5
Resistance to pilling

 Pulizia facile con acqua
Easy water cleaning - Nettoyage facile à l'eau - Einfache Reinigung mit Wasser

CURA & MANUTENZIONE

Care & Maintenance - Entretien et Maintenance - Pflege & Wartung



[BAHIA »](#)

[BAKU »](#)

[BANGKOK »](#)

[BARCELLONA »](#)

[BASILEA »](#)

[BASTIA »](#)

BELFAST

[BELLAGIO »](#)

[BERNA »](#)

[BILBAO »](#)

[BOLOGNA »](#)

[BONIFACIO »](#)

[BOSTON »](#)

[BRUXELLS »](#)

[BUCHAREST »](#)

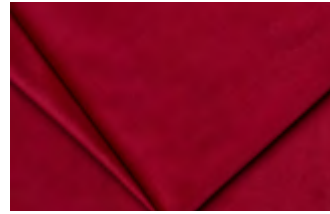
[BUENOS AIRES »](#)



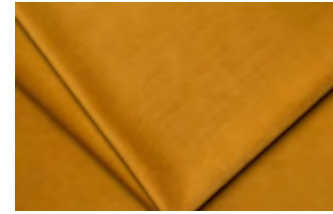
Belfast 02



Belfast 03



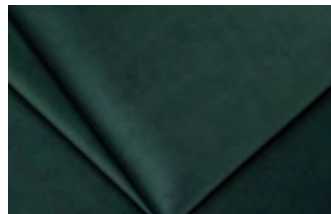
Belfast 07



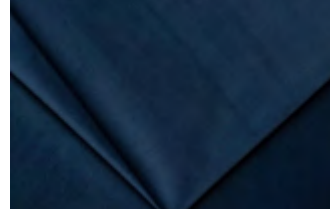
Belfast 08



Belfast 09



Belfast 10



Belfast 11



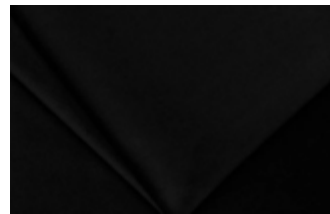
Belfast 14



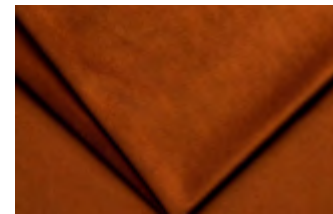
Belfast 15



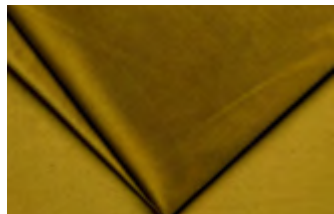
Belfast 18



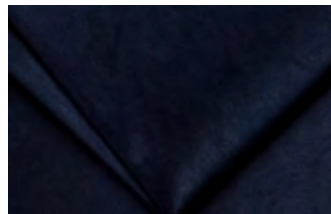
Belfast 20



Belfast 33



Belfast 34



Belfast 37

INFORMAZIONI TECNICHE

*Technical information - informations techniques -
technische Informationen*

Composizione

Composition 100% Polyester
Composition-
Zusammensetzung

Altezza

Height 142 cm (+/- 2 cm)
Hauteur
Höhe

Peso

Weigh 350 g/m2 (+/- 5%)
Poids
Gewicht

Martindale

Martindale abrasion ≥ 50.000

Pilling

Resistance to pilling 4/5

CURA & MANUTENZIONE

*Care & Maintenance - Entretien et Maintenance -
Pflege & Wartung*



[BAHIA »](#)

[BAKU »](#)

[BANGKOK »](#)

[BARCELLONA »](#)

[BASILEA »](#)

[BASTIA »](#)

[BELFAST »](#)

BELLAGIO

[BERNA »](#)

[BILBAO »](#)

[BOLOGNA »](#)

[BONIFACIO »](#)

[BOSTON »](#)

[BRUXELLS »](#)

[BUCHAREST »](#)

[BUENOS AIRES »](#)



Bellagio
tigrato 01



Bellagio
damascato 01



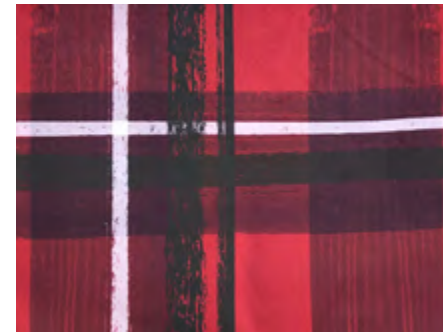
Bellagio
damascato 02



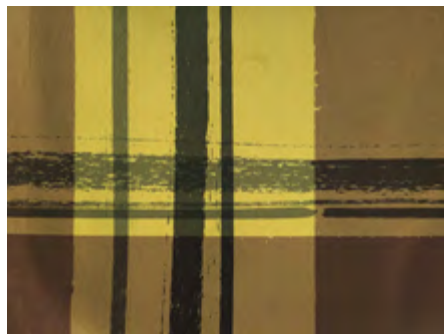
Bellagio
damascato 03



Bellagio
damascato 05



Bellagio
scozzese 02



Bellagio
scozzese 03



Bellagio
scozzese 04

INFORMAZIONI TECNICHE

*Technical information - informations techniques -
technische Informationen*


Composizione
Composition 100% PL
Composition-
Zusammensetzung

Altezza
Height 140 CM
Hauteur
Höhe

Peso
Weigh 390 ± 5% gr/mq
Poids
Gewicht

Martindale 100.000
Martindale abrasion

Pilling 5
Resistance to pilling

 **Idrorepellente**
Water repellent - Hydrofuge
Wasserabweisend

CURA & MANUTENZIONE

*Care & Maintenance- Entretien et Maintenance -
Pflege & Wartung*



[BAHIA »](#)

[BAKU »](#)

[BANGKOK »](#)

[BARCELLONA »](#)

[BASILEA »](#)

[BASTIA »](#)

[BELFAST »](#)

[BELLAGIO »](#)

BERNA

[BILBAO »](#)

[BOLOGNA »](#)

[BONIFACIO »](#)

[BOSTON »](#)

[BRUXELLS »](#)

[BUCHAREST »](#)

[BUENOS AIRES »](#)



Berna 01



Berna 02



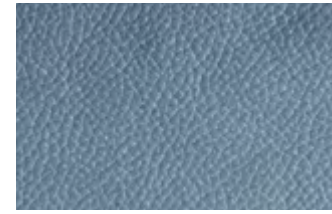
Berna 05



Berna 06



Berna 07



Berna 09



Berna 10



Berna 11



Berna 12



Berna 13



Berna 14



Berna 15



Berna 16



Berna 17



Berna 18



Berna 19



Berna 21



Berna 22

INFORMAZIONI TECNICHE

Technical information - informations techniques - technische Informationen

Composizione

Composition 95% PL- 5% PU
Composition- Zusammensetzung

Altezza

Height 140 CM
Hauteur
Höhe

Peso

Weigh 360 ± 5% gr/mq
Poids
Gewicht

Martindale

Martindale abrasion 40.000

Pilling

4/5

Resistance to pilling



Idrorepellente
Water repellent - Hydrofuge
Wasserabweisend



Irrestringibile
No shrink - Irrétrécissable
- krumpfecht

CURA & MANUTENZIONE

Care & Maintenance- Entretien et Maintenance - Pflege & Wartung



[BAHIA »](#)

[BAKU »](#)

[BANGKOK »](#)

[BARCELLONA »](#)

[BASILEA »](#)

[BASTIA »](#)

[BELFAST »](#)

[BELLAGIO »](#)

[BERNA »](#)

BILBAO

[BOLOGNA »](#)

[BONIFACIO »](#)

[BOSTON »](#)

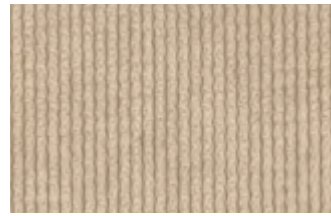
[BRUXELLS »](#)

[BUCHAREST »](#)

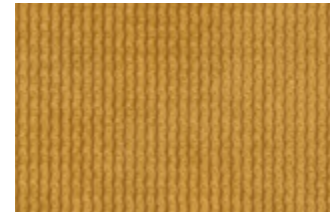
[BUENOS AIRES »](#)



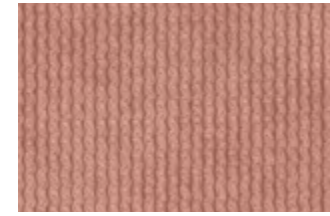
Bilbao 03



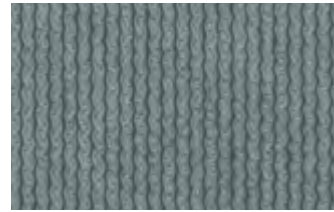
Bilbao 06



Bilbao 48



Bilbao 61



Bilbao 72



Bilbao 77

INFORMAZIONI TECNICHE

*Technical information - informations techniques -
technische Informationen*

Composizione

Composition 94% PES 6%NY
Composition-
Zusammensetzung

Altezza

Height min.140 cm
Hauteur
Höhe

Peso

Weigh 330g/m2 +/- 5%
Poids
Gewicht

Martindale ≥35000

Martindale abrasion

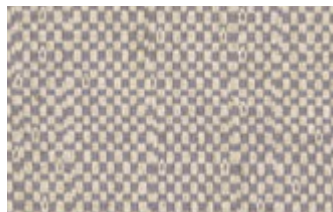
Pilling ≥4-5

Resistance to pilling

CURA & MANUTENZIONE

*Care & Maintenance- Entretien et Maintenance -
Pflege & Wartung*





Bologna 70

[BAHIA »](#)

[BAKU »](#)

[BANGKOK »](#)

[BARCELLONA »](#)

[BASILEA »](#)

[BASTIA »](#)

[BELFAST »](#)

[BELLAGIO »](#)

[BERNA »](#)

[BILBAO »](#)

BOLOGNA

[BONIFACIO »](#)

[BOSTON »](#)

[BRUXELLS »](#)

[BUCHAREST »](#)

[BUENOS AIRES »](#)

« Home

INFORMAZIONI TECNICHE

*Technical information - informations techniques -
technische Informationen*

Composizione 49% PES;
Composition 29%VI; 12%LI;
*Composition-
Zusammensetzung* 11%CO

Altezza
Height min.140 cm
Hauteu
Höhe

Peso
Weigh 550g/m2 +/- 5%
Poids
Gewicht

Martindale ≥35000
Martindale abrasion

Pilling ≥4-5
Resistance to pilling

CURA & MANUTENZIONE

*Care & Maintenance- Entretien et Maintenance -
Pflege & Wartung*



[BAHIA »](#)

[BAKU »](#)

[BANGKOK »](#)

[BARCELLONA »](#)

[BASILEA »](#)

[BASTIA »](#)

[BELFAST »](#)

[BELLAGIO »](#)

[BERNA »](#)

[BILBAO »](#)

[BOLOGNA »](#)

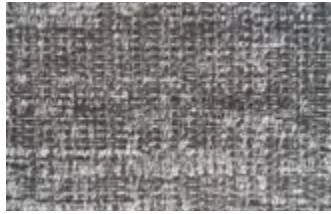
BONIFACIO

[BOSTON »](#)

[BRUXELLS »](#)

[BUCHAREST »](#)

[BUENOS AIRES »](#)



Bonifacio 905



Bonifacio 909



Bonifacio 922

INFORMAZIONI TECNICHE

*Technical information - informations techniques -
technische Informationen*

Composizione 49% PC/ 15%
Composition CO/ 36% PL
*Composition-
Zusammensetzung*

Altezza 145/150 cm
Height
Hauteur
Höhe

Peso 485 g/ml
Weigh
Poids
Gewicht

Martindale 30.000
Martindale abrasion

Pilling 4/5
Resistance to pilling

CURA & MANUTENZIONE

*Care & Maintenance- Entretien et Maintenance -
Pflege & Wartung*



[BAHIA »](#)

[BAKU »](#)

[BANGKOK »](#)

[BARCELLONA »](#)

[BASILEA »](#)

[BASTIA »](#)

[BELFAST »](#)

[BELLAGIO »](#)

[BERNA »](#)

[BILBAO »](#)

[BOLOGNA »](#)

[BONIFACIO »](#)

BOSTON

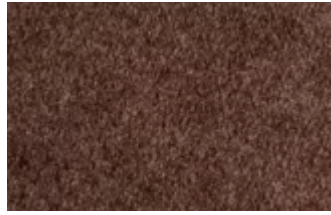
[BRUXELLS »](#)

[BUCHAREST »](#)

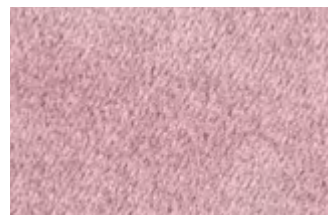
[BUENOS AIRES »](#)



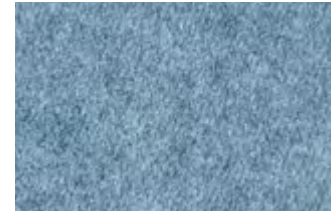
Boston 02



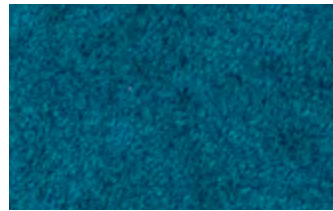
Boston 05



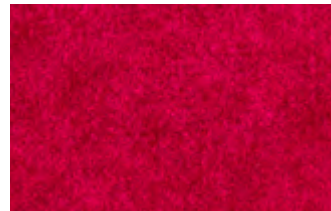
Boston 06



Boston 09



Boston 12



Boston 17



Boston 18

INFORMAZIONI TECNICHE

*Technical information - informations techniques -
technische Informationen*

Composizione

Composition 100% PES
Composition-
Zusammensetzung

Altezza

Height 145 +/- 2 cm
Hauteur
Höhe

Peso

Weigh 370g/m2
Poids
Gewicht

Martindale 100.000

Martindale abrasion

Pilling

4/5
Resistance to pilling

CURA & MANUTENZIONE

*Care & Maintenance- Entretien et Maintenance -
Pflege & Wartung*



[BAHIA »](#)

[BAKU »](#)

[BANGKOK »](#)

[BARCELLONA »](#)

[BASILEA »](#)

[BASTIA »](#)

[BELFAST »](#)

[BELLAGIO »](#)

[BERNA »](#)

[BILBAO »](#)

[BOLOGNA »](#)

[BONIFACIO »](#)

[BOSTON »](#)

BRUXELLS

[BUCHAREST »](#)

[BUENOS AIRES »](#)



Bruxells 02



Bruxells 04



Bruxells 05



Bruxells 07



Bruxells 09



Bruxells 10



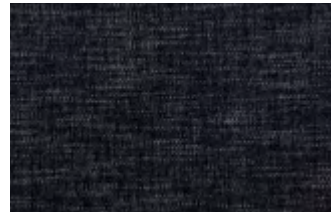
Bruxells 11



Bruxells 12



Bruxells 13



Bruxells 14



Bruxells 15



Bruxells 16

INFORMAZIONI TECNICHE

*Technical information - informations techniques -
technische Informationen*

Composizione

Composition 100 % polyester
Composition-
Zusammensetzung

Altezza

Height 142 cm ± 2 cm
Hauteur
Höhe

Peso

Weigh 409 g/m² ± 5%
Poids
Gewicht

Martindale

Martindale abrasion 90.000

Pilling

4/5
Resistance to pilling



Pulizia facile
con acqua

*Easy water cleaning - Nettoyage facile à l'eau - Einfache
reinigung mit wasser*



Idrorepellente

Water repellent - Hydrofuge
Wasserabweisend

CURA & MANUTENZIONE

*Care & Maintenance- Entretien et Maintenance -
Pflege & Wartung*



[BAHIA »](#)

[BAKU »](#)

[BANGKOK »](#)

[BARCELLONA »](#)

[BASILEA »](#)

[BASTIA »](#)

[BELFAST »](#)

[BELLAGIO »](#)

[BERNA »](#)

[BILBAO »](#)

[BOLOGNA »](#)

[BONIFACIO »](#)

[BOSTON »](#)

[BRUXELLS »](#)

BUCHAREST

[BUENOS AIRES »](#)



Bucharest 02



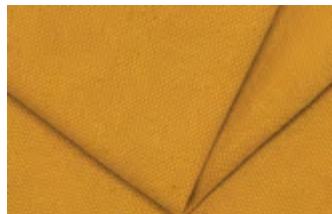
Bucharest 03



Bucharest 05



Bucharest 06



Bucharest 09



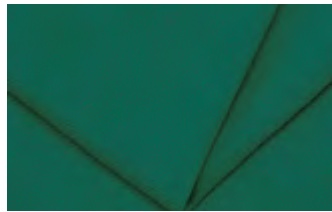
Bucharest 15



Bucharest 19



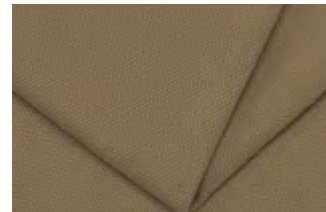
Bucharest 20



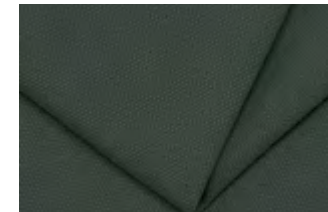
Bucharest 22



Bucharest 24



Bucharest 27



Bucharest 28



Bucharest 34

INFORMAZIONI TECNICHE

*Technical information - informations techniques -
technische Informationen*

Composizione

Composition 100 %Cotton
Composition-
Zusammensetzung

Altezza

Height 140 cm
Hauteur
Höhe

Peso

Weigh 503 g/ml
Poids
Gewicht

Martindale

Martindale abrasion 32000

Pilling

Resistance to pilling 4/5

CURA & MANUTENZIONE

*Care & Maintenance- Entretien et Maintenance -
Pflege & Wartung*



[BAHIA »](#)

[BAKU »](#)

[BANGKOK »](#)

[BARCELLONA »](#)

[BASILEA »](#)

[BASTIA »](#)

[BELFAST »](#)

[BELLAGIO »](#)

[BERNA »](#)

[BILBAO »](#)

[BOLOGNA »](#)

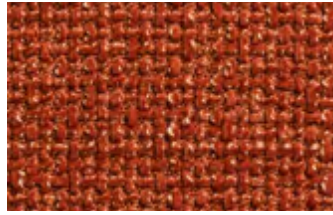
[BONIFACIO »](#)

[BOSTON »](#)

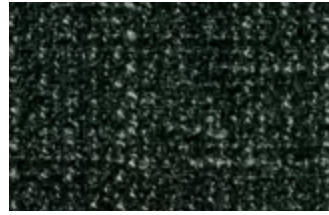
[BRUXELLS »](#)

[BUCHAREST »](#)

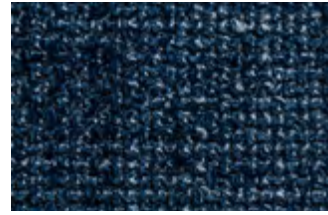
BUENOS AIRES



Buenos Aires 06



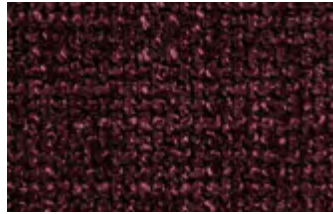
Buenos Aires 13



Buenos Aires 14



Buenos Aires 28



Buenos Aires 80



Buenos Aires 100



Buenos Aires 102



Buenos Aires 130



Buenos Aires 200



Buenos Aires 204



Buenos Aires 205



Buenos Aires 615



Buenos Aires 616

**INFORMAZIONI
TECNICHE**

*Technical information - informations techniques -
technische Informationen*

Composizione

Composition 100 % polyester
Composition-
Zusammensetzung

Altezza

Height >=140 cm
Hauteur
Höhe

Peso

Weigh 435g/m2
Poids
Gewicht

Martindale 100000

Martindale abrasion

Pilling 4/5

Resistance to pilling

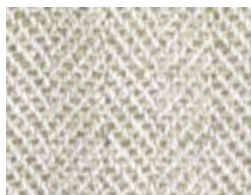
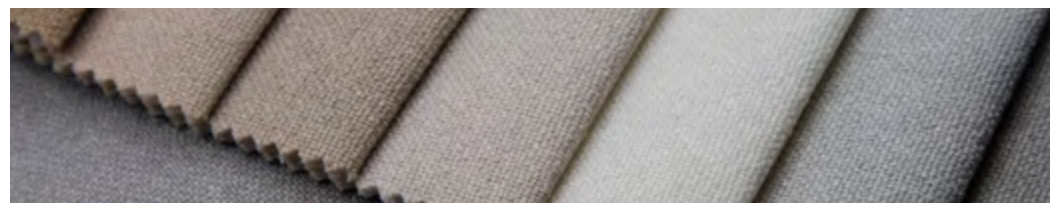
CURA & MANUTENZIONE

*Care & Maintenance- Entretien et Maintenance -
Pflege & Wartung*

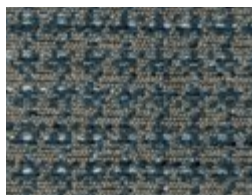


TESSUTO

Fabric - Tissu - Stoffe



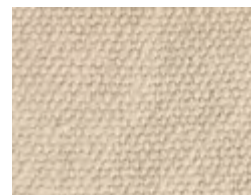
CABO FRIO »



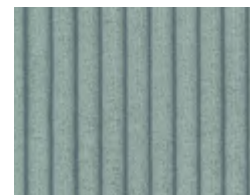
CADICE »



CALCUTTA »



CALIENTE »



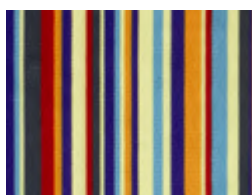
CALIPSO »



CANNES »



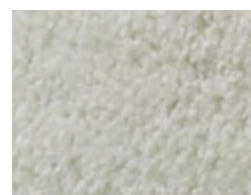
CAPE TOWN »



CAPOLIVERI »



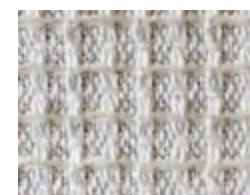
CARDIFF »



CAROLINA »



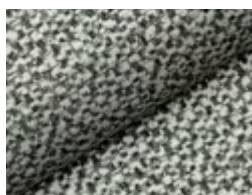
CARTAGENA »



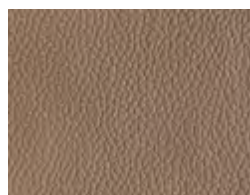
CASABLANCA »



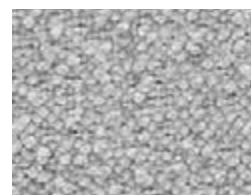
CATANIA »



CHICAGO »



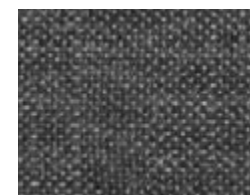
CINCINNATI »



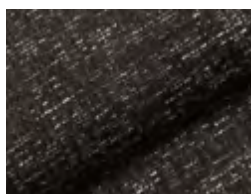
CIPRO »



COLUMBIA »



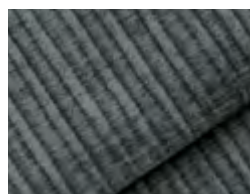
COPENAGHEN »



CORDOVA »



CORK »



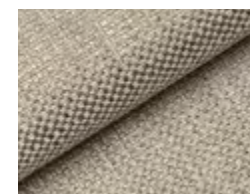
CORVARA »



COSTARICA »



CRACOVIA »



CREMONA »

Big

CABO FRIO

[CADICE »](#)

[CALCUTTA »](#)

[CALIENTE »](#)

[CALIPSO »](#)

[CANNES »](#)

[CAPE TOWN »](#)

[CAPOLIVERI »](#)

[CARDIFF »](#)

[CAROLINA »](#)

[CARTAGENA »](#)

[CASABLANCA »](#)

[CATANIA »](#)

[CHICAGO »](#)

[CINCINNATI »](#)

[CIPRO »](#)

[COLUMBIA »](#)

[COPENAGHEN »](#)

[CORDOVA »](#)

[CORK »](#)

[CORVARA »](#)

[COSTARICA »](#)

[CRACOVIA »](#)

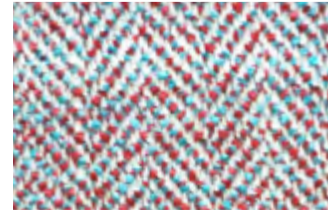
[CREMONA »](#)



Cabo Frio 901



Cabo Frio 905



Cabo Frio 909



Cabo Frio 910



Cabo Frio 913



Cabo Frio 914



Cabo Frio 915



Cabo Frio 917



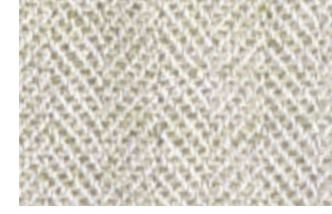
Cabo Frio 918



Cabo Frio 920



Cabo Frio 921



Cabo Frio 926

**INFORMAZIONI
 TECNICHE**

*Technical information - informations techniques -
 technische Informationen*

Composizione 51%Pc, 26%Vi,
 Composition 11% li
 Composition-
 Zusammensetzung

Altezza 145/150
 Height
 Hauteur
 Höhe

Peso 810 g/m2
 Weigh
 Poids
 Gewicht

Martindale 32000
 Martindale abrasion

Pilling 5
 Resistance to pilling

CURA & MANUTENZIONE

*Care & Maintenance- Entretien et Maintenance -
 Pflege & Wartung*



[CABO FRIO »](#)

CADICE

[CALCUTTA »](#)

[CALIENTE »](#)

[CALIPSO »](#)

[CANNES »](#)

[CAPE TOWN »](#)

[CAPOLIVERI »](#)

[CARDIFF »](#)

[CAROLINA »](#)

[CARTAGENA »](#)

[CASABLANCA »](#)

[CATANIA »](#)

[CHICAGO »](#)

[CINCINNATI »](#)

[CIPRO »](#)

[COLUMBIA »](#)

[COPENAGHEN »](#)

[CORDOVA »](#)

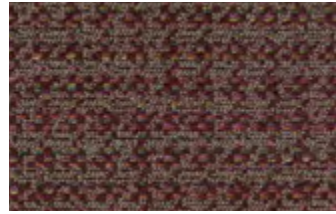
[CORK »](#)

[CORVARA »](#)

[COSTARICA »](#)

[CRACOVIA »](#)

[CREMONA »](#)



Cadice 01



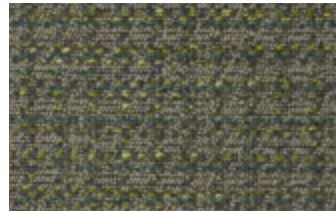
Cadice 02



Cadice 03



Cadice 04



Cadice 05



Cadice 06



Cadice 07

INFORMAZIONI TECNICHE

*Technical information - informations techniques -
technische Informationen*


Composizione 49% polyester,
Composition 40% acrylic,
Composition- 11% viscoso
Zusammensetzung

Altezza
Height 140 cm ± 2 cm
Hauteur
Höhe

Peso
Weigh 660 g/m2
Poids
Gewicht

Martindale 35000
Martindale abrasion

Pilling 4
Resistance to pilling

 Pulizia facile
 con acqua
*Easy water cleaning - Nettoyage facile à l'eau - Einfache
 reinigung mit wasser*

 Idrorepellente
 Water repellent - Hydrofuge
 Wasserabweisend

CURA & MANUTENZIONE

*Care & Maintenance - Entretien et Maintenance -
Pflege & Wartung*



[CABO FRIO »](#)

[CADICE »](#)

CALCUTTA

[CALIENTE »](#)

[CALIPSO »](#)

[CANNES »](#)

[CAPE TOWN »](#)

[CAPOLIVERI »](#)

[CARDIFF »](#)

[CAROLINA »](#)

[CARTAGENA »](#)

[CASABLANCA »](#)

[CATANIA »](#)

[CHICAGO »](#)

[CINCINNATI »](#)

[CIPRO »](#)

[COLUMBIA »](#)

[COPENAGHEN »](#)

[CORDOVA »](#)

[CORK »](#)

[CORVARA »](#)

[COSTARICA »](#)

[CRACOVIA »](#)

[CREMONA »](#)



Calcutta 115



Calcutta 503



Calcutta 600



Calcutta 604



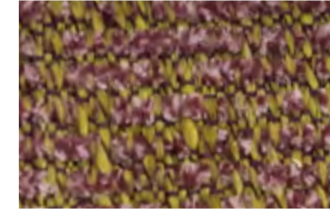
Calcutta 606



Calcutta 703



Calcutta 803



Calcutta 815



Calcutta 905

INFORMAZIONI TECNICHE

Technical information - informations techniques - technische Informationen


Composizione 92%PL
Composition 8%PC
Composition-Zusammensetzung

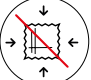
Altezza 140 cm
Height
Hauteur
Höhe

Peso 370 g/m2 (+/- 4%)
Weigh
Poids
Gewicht

Martindale 40.000
Martindale abrasion

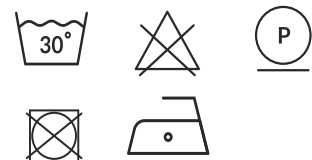
Pilling 4
Resistance to pilling

 **Idrorepellente**
Water repellent - Hydrofuge
Wasserabweisend

 **Irrestringibile**
No shrink - Irrétrécissable
- krumpfecht

CURA & MANUTENZIONE

Care & Maintenance- Entretien et Maintenance - Pflege & Wartung



[CABO FRIO »](#)

[CADICE »](#)

[CALCUTTA »](#)

CALIENTE

[CALIPSO »](#)

[CANNES »](#)

[CAPE TOWN »](#)

[CAPOLIVERI »](#)

[CARDIFF »](#)

[CAROLINA »](#)

[CARTAGENA »](#)

[CASABLANCA »](#)

[CATANIA »](#)

[CHICAGO »](#)

[CINCINNATI »](#)

[CIPRO »](#)

[COLUMBIA »](#)

[COPENAGHEN »](#)

[CORDOVA »](#)

[CORK »](#)

[CORVARA »](#)

[COSTARICA »](#)

[CRACOVIA »](#)

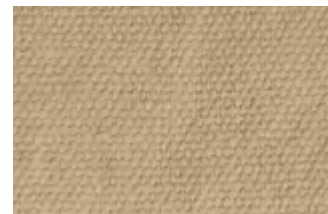
[CREMONA »](#)



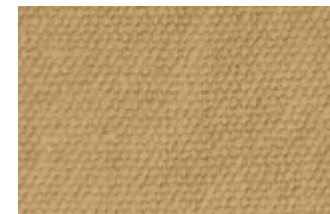
Caliente 1



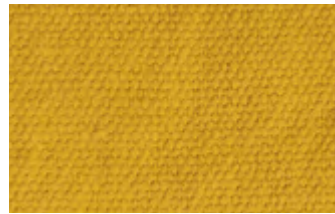
Caliente 2/A



Caliente 3/A



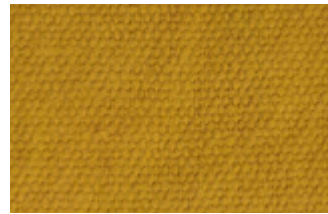
Caliente 6



Caliente 8



Caliente 11/A



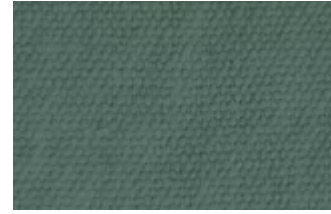
Caliente 13/A



Caliente 16



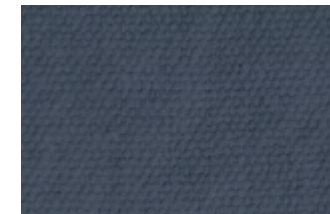
Caliente 18/A



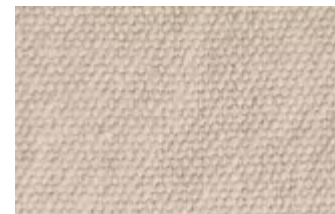
Caliente 19/A



Caliente 21/A



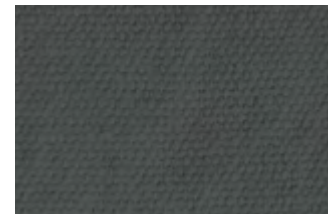
Caliente 27



Caliente 34



Caliente 35



Caliente 38

INFORMAZIONI TECNICHE

*Technical information - informations techniques -
technische Informationen*

Composizione

Composition 100% Lino
Composition-
Zusammensetzung

Altezza

Height 140/145 cm
Hauteur
Höhe

Peso

Weigh 561 g/m2
Poids
Gewicht

Martindale

Martindale abrasion 25000

Pilling

Resistance to pilling 4

CURA & MANUTENZIONE

*Care & Maintenance- Entretien et Maintenance -
Pflege & Wartung*



[CABO FRIO »](#)

[CADICE »](#)

[CALCUTTA »](#)

[CALIENTE »](#)

CALIPSO

[CANNES »](#)

[CAPE TOWN »](#)

[CAPOLIVERI »](#)

[CARDIFF »](#)

[CAROLINA »](#)

[CARTAGENA »](#)

[CASABLANCA »](#)

[CATANIA »](#)

[CHICAGO »](#)

[CINCINNATI »](#)

[CIPRO »](#)

[COLUMBIA »](#)

[COPENAGHEN »](#)

[CORDOVA »](#)

[CORK »](#)

[CORVARA »](#)

[COSTARICA »](#)

[CRACOVIA »](#)

[CREMONA »](#)



Calipso 03



Calipso 17



Calipso 61



Calipso 63



Calipso 72



Calipso 83

INFORMAZIONI TECNICHE

Technical information - informations techniques - technische Informationen

Composizione

Composition 92% PES 8% NY
Composition- 92% PES 8% NY
Zusammensetzung

Altezza

Height min. 140cm
Hauteur
Höhe

Peso

Weigh 380g/m² +/- 10%
Poids
Gewicht

Martindale ≥35000

Martindale abrasion

Pilling 4

Resistance to pilling



CURA & MANUTENZIONE

Care & Maintenance - Entretien et Maintenance - Pflege & Wartung





Cannes 02



Cannes 09

[CABO FRIO »](#)

[CADICE »](#)

[CALCUTTA »](#)

[CALIENTE »](#)

[CALIPSO »](#)

CANNES

[CAPE TOWN »](#)

[CAPOLIVERI »](#)

[CARDIFF »](#)

[CAROLINA »](#)

[CARTAGENA »](#)

[CASABLANCA »](#)

[CATANIA »](#)

[CHICAGO »](#)

[CINCINNATI »](#)

[CIPRO »](#)

[COLUMBIA »](#)

[COPENAGHEN »](#)

[CORDOVA »](#)

[CORK »](#)

[CORVARA »](#)

[COSTARICA »](#)

[CRACOVIA »](#)

[CREMONA »](#)

« Home

INFORMAZIONI TECNICHE

*Technical information - informations techniques -
technische Informationen*


Composizione 93% polyester,
Composition 7% cotton
*Composition-
Zusammensetzung*

Altezza
Height 142 cm ± 2 cm
Hauteur
Höhe

Peso 474 g/m2
Weight
Poids
Gewicht

Martindale >50 000
Martindale abrasion

Pilling 5
Resistance to pilling

 Pulizia facile
 con acqua
*Easy water cleaning - Nettoyage facile à l'eau - Einfache
 reinigung mit wasser*

 Idrorepellente
 Water repellent - Hydrofuge
 Wasserabweisend

CURA & MANUTENZIONE

*Care & Maintenance- Entretien et Maintenance -
Pflege & Wartung*



[CABO FRIO »](#)

[CADICE »](#)

[CALCUTTA »](#)

[CALIENTE »](#)

[CALIPSO »](#)

[CANNES »](#)

CAPE TOWN

[CAPOLIVERI »](#)

[CARDIFF »](#)

[CAROLINA »](#)

[CARTAGENA »](#)

[CASABLANCA »](#)

[CATANIA »](#)

[CHICAGO »](#)

[CINCINNATI »](#)

[CIPRO »](#)

[COLUMBIA »](#)

[COPENAGHEN »](#)

[CORDOVA »](#)

[CORK »](#)

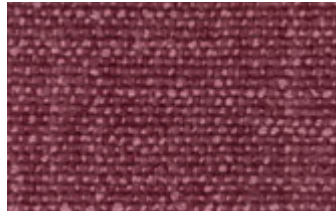
[CORVARA »](#)

[COSTARICA »](#)

[CRACOVIA »](#)

[CREMONA »](#)

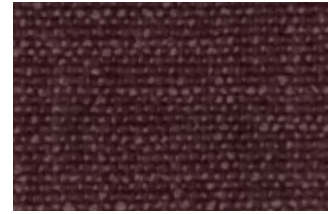
« Home



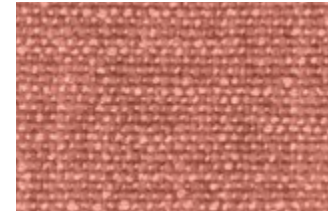
Cape Town 001



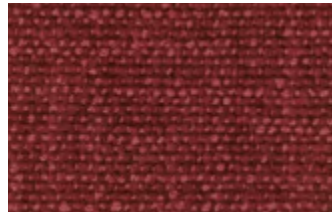
Cape Town 111



Cape Town 303



Cape Town 304



Cape Town 306



Cape Town 400



Cape Town 405



Cape Town 406



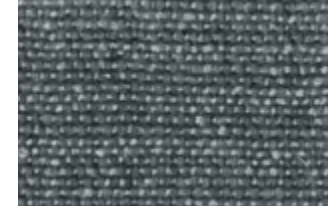
Cape Town 501



Cape Town 503



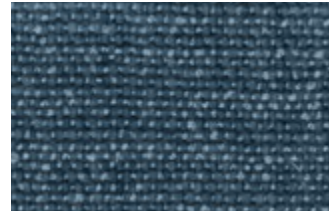
Cape Town 601



Cape Town 602



Cape Town 605



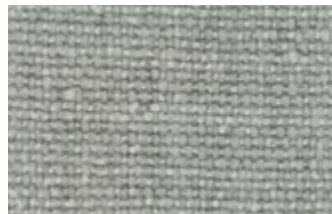
Cape Town 704



Cape Town 803



Cape Town 804



Cape Town 601

INFORMAZIONI TECNICHE

*Technical information - informations techniques -
technische Informationen*


Composizione 92%PL
Composition 8%PC
Composition-
Zusammensetzung

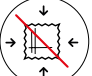
Altezza 140 cm
Height
Hauteu
Höhe

Peso 785 g/m2 (+/- 4%)
Weigh
Poids
Gewicht

Martindale 55.000
Martindale abrasion

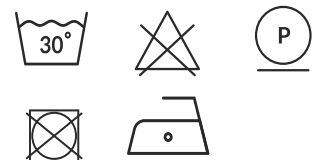
Pilling 4
Resistance to pilling

 **Idrorepellente**
Water repellent - Hydrofuge
Wasserabweisend

 **Irrestringibile**
No shrink - Irrétrécissable
- krumpfecht

CURA & MANUTENZIONE

*Care & Maintenance- Entretien et Maintenance -
Pflege & Wartung*



[CABO FRIO »](#)

[CADICE »](#)

[CALCUTTA »](#)

[CALIENTE »](#)

[CALIPSO »](#)

[CANNES »](#)

[CAPE TOWN »](#)

CAPOLIVERI

[CARDIFF »](#)

[CAROLINA »](#)

[CARTAGENA »](#)

[CASABLANCA »](#)

[CATANIA »](#)

[CHICAGO »](#)

[CINCINNATI »](#)

[CIPRO »](#)

[COLUMBIA »](#)

[COPENAGHEN »](#)

[CORDOVA »](#)

[CORK »](#)

[CORVARA »](#)

[COSTARICA »](#)

[CRACOVIA »](#)

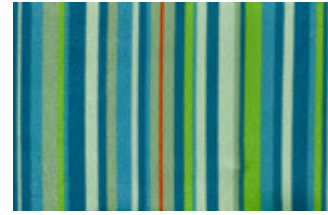
[CREMONA »](#)



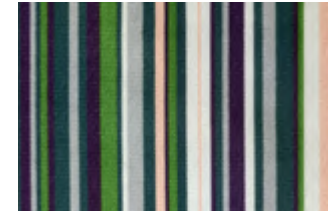
Capoliveri 300



Capoliveri 600



Capoliveri 800



Capoliveri 900

INFORMAZIONI TECNICHE

Technical information - informations techniques - technische Informationen


Composizione 100%PL
Composition
Composition-
Zusammensetzung

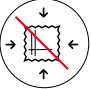
Altezza 140 cm
Height
Hauteu
Höhe

Peso 525 g/m (+/- 4%)
Weigh
Poids
Gewicht

Martindale 20.000
Martindale abrasion

Pilling 5
Resistance to pilling

 **Idrorepellente**
 Water repellent - Hydrofuge
 Wasserabweisend

 **Irrestringibile**
 No shrink - Irrétrécissable
 - krumpfecht

CURA & MANUTENZIONE

Care & Maintenance- Entretien et Maintenance - Pflege & Wartung



[CABO FRIO »](#)

[CADICE »](#)

[CALCUTTA »](#)

[CALIENTE »](#)

[CALIPSO »](#)

[CANNES »](#)

[CAPE TOWN »](#)

[CAPOLIVERI »](#)

CARDIFF

[CAROLINA »](#)

[CARTAGENA »](#)

[CASABLANCA »](#)

[CATANIA »](#)

[CHICAGO »](#)

[CINCINNATI »](#)

[CIPRO »](#)

[COLUMBIA »](#)

[COPENAGHEN »](#)

[CORDOVA »](#)

[CORK »](#)

[CORVARA »](#)

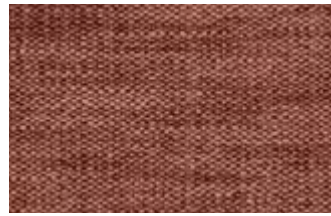
[COSTARICA »](#)

[CRACOVIA »](#)

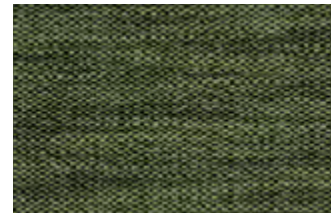
[CREMONA »](#)



Cardiff 04



Cardiff 05



Cardiff 06



Cardiff 07



Cardiff 08



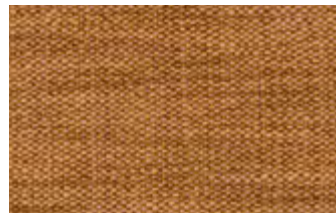
Cardiff 09



Cardiff 10



Cardiff 11



Cardiff 12



Cardiff 13

INFORMAZIONI TECNICHE

*Technical information - informations techniques -
technische Informationen*


Composizione 59% polyamide,
23% polyester,
13% viscose, 5%
linen
Composition
Composition-
Zusammensetzung

Altezza 140 cm ± 2 cm
Height
Hauteur
Höhe

Peso 550 g/m² ± 5%
Weigh
Poids
Gewicht

Martindale 50 000
Martindale abrasion

Pilling 4
Resistance to pilling

 Pulizia facile
con acqua
*Easy water cleaning - Nettoyage facile à l'eau - Einfache
reinigung mit wasser*

 Idrorepellente
Water repellent - Hydrofuge
Wasserabweisend

CURA & MANUTENZIONE

*Care & Maintenance- Entretien et Maintenance -
Pflege & Wartung*





Carolina 200

[CABO FRIO »](#)

[CADICE »](#)

[CALCUTTA »](#)

[CALIENTE »](#)

[CALIPSO »](#)

[CANNES »](#)

[CAPE TOWN »](#)

[CAPOLIVERI »](#)

[CARDIFF »](#)

CAROLINA

[CARTAGENA »](#)

[CASABLANCA »](#)

[CATANIA »](#)

[CHICAGO »](#)

[CINCINNATI »](#)

[CIPRO »](#)

[COLUMBIA »](#)

[COPENAGHEN »](#)

[CORDOVA »](#)

[CORK »](#)

[CORVARA »](#)

[COSTARICA »](#)

[CRACOVIA »](#)

[CREMONA »](#)

« Home

INFORMAZIONI TECNICHE

*Technical information - informations techniques -
technische Informationen*

Composizione

Composition 100% PL
Composition-
Zusammensetzung

Altezza

Height
Hauteur
Höhe

Peso

Weigh 570 g/m2
Poids
Gewicht

Martindale 100 000

Martindale abrasion

Pilling

Resistance to pilling

CURA & MANUTENZIONE

*Care & Maintenance- Entretien et Maintenance -
Pflege & Wartung*



[CABO FRIO »](#)

[CADICE »](#)

[CALCUTTA »](#)

[CALIENTE »](#)

[CALIPSO »](#)

[CANNES »](#)

[CAPE TOWN »](#)

[CAPOLIVERI »](#)

[CARDIFF »](#)

[CAROLINA »](#)

CARTAGENA

[CASABLANCA »](#)

[CATANIA »](#)

[CHICAGO »](#)

[CINCINNATI »](#)

[CIPRO »](#)

[COLUMBIA »](#)

[COPENAGHEN »](#)

[CORDOVA »](#)

[CORK »](#)

[CORVARA »](#)

[COSTARICA »](#)

[CRACOVIA »](#)

[CREMONA »](#)



Cartagena 01



Cartagena 02



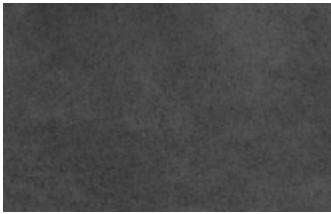
Cartagena 04



Cartagena 06



Cartagena 07



Cartagena 08

**INFORMAZIONI
 TECNICHE**

*Technical information - informations techniques -
 technische Informationen*

Composizione 100% PES (surface)
 Composition / 100% LEATHER
 Composition- (backing)
 Zusammensetzung

Altezza 140 cm
 Height
 Hauteur
 Höhe

Peso 480 g/m2 +/-10%
 Weigh
 Poids
 Gewicht

Martindale >80.000
 Martindale abrasion

Pilling 5
 Resistance to pilling



Idrorepellente
 Water repellent - Hydrofuge
 Wasserabweisend



Irrestringibile
 No shrink - Irrétrécissable
 - krumpfecht

CURA & MANUTENZIONE

*Care & Maintenance- Entretien et Maintenance -
 Pflege & Wartung*



[CABO FRIO »](#)

[CADICE »](#)

[CALCUTTA »](#)

[CALIENTE »](#)

[CALIPSO »](#)

[CANNES »](#)

[CAPE TOWN »](#)

[CAPOLIVERI »](#)

[CARDIFF »](#)

[CAROLINA »](#)

[CARTAGENA »](#)

CASABLANCA

[CATANIA »](#)

[CHICAGO »](#)

[CINCINNATI »](#)

[CIPRO »](#)

[COLUMBIA »](#)

[COPENAGHEN »](#)

[CORDOVA »](#)

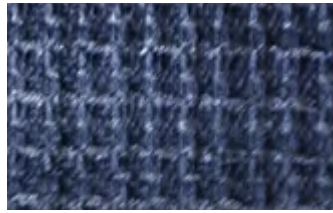
[CORK »](#)

[CORVARA »](#)

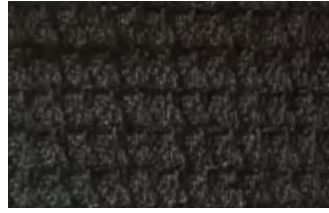
[COSTARICA »](#)

[CRACOVIA »](#)

[CREMONA »](#)



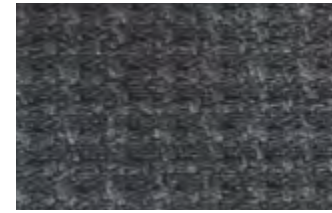
Casablanca 05



Casablanca 07



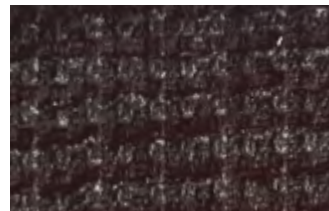
Casablanca 08



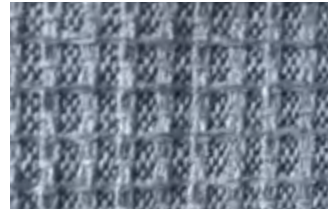
Casablanca 66



Casablanca 162



Casablanca 280



Casablanca 370



Casablanca 800

INFORMAZIONI TECNICHE

*Technical information - informations techniques -
technische Informationen*

Composizione

Composition 80% CO, 20% PC
 Composition-
 Zusammensetzung

Altezza

Height 1407145
 Hauteur
 Höhe

Peso

Weigh 645 g/m2
 Poids
 Gewicht

Martindale

Martindale abrasion 40000

Pilling

4/5
 Resistance to pilling

Prodotto con cotone riciclato
 Product made with recycled cotton
 Produit fabriqué avec du coton recyclé
 Produkt aus recycelter Baumwolle

CURA & MANUTENZIONE

*Care & Maintenance- Entretien et Maintenance -
Pflege & Wartung*



[CABO FRIO »](#)

[CADICE »](#)

[CALCUTTA »](#)

[CALIENTE »](#)

[CALIPSO »](#)

[CANNES »](#)

[CAPE TOWN »](#)

[CAPOLIVERI »](#)

[CARDIFF »](#)

[CAROLINA »](#)

[CARTAGENA »](#)

[CASABLANCA »](#)

CATANIA

[CHICAGO »](#)

[CINCINNATI »](#)

[CIPRO »](#)

[COLUMBIA »](#)

[COPENAGHEN »](#)

[CORDOVA »](#)

[CORK »](#)

[CORVARA »](#)

[COSTARICA »](#)

[CRACOVIA »](#)

[CREMONA »](#)



Catania 300



Catania 400



Catania 800

INFORMAZIONI TECNICHE

*Technical information - informations techniques -
technische Informationen*

Composizione

Composition 100%PL
 Composition-
 Zusammensetzung

Altezza

Height 140 cm
 Hauteur
 Höhe

Peso

Weigh 525 g/m (+/- 4%)
 Poids
 Gewicht

Martindale

Martindale abrasion 20.000

Pilling

Resistance to pilling 5



Idrorepellente
 Water repellent - Hydrofuge
 Wasserabweisend



Irrestringibile
 No shrink - Irrétrécissable
 - krumpfecht

CURA & MANUTENZIONE

*Care & Maintenance- Entretien et Maintenance -
Pflege & Wartung*



[CABO FRIO »](#)

[CADICE »](#)

[CALCUTTA »](#)

[CALIENTE »](#)

[CALIPSO »](#)

[CANNES »](#)

[CAPE TOWN »](#)

[CAPOLIVERI »](#)

[CARDIFF »](#)

[CAROLINA »](#)

[CARTAGENA »](#)

[CASABLANCA »](#)

[CATANIA »](#)

CHICAGO

[CINCINNATI »](#)

[CIPRO »](#)

[COLUMBIA »](#)

[COPENAGHEN »](#)

[CORDOVA »](#)

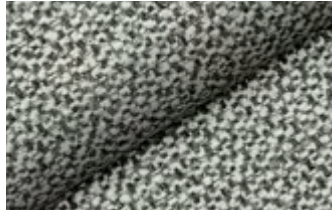
[CORK »](#)

[CORVARA »](#)

[COSTARICA »](#)

[CRACOVIA »](#)

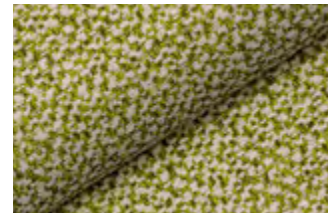
[CREMONA »](#)



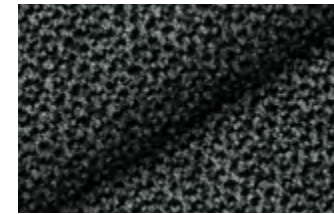
Chicago 02



Chicago 08



Chicago 10



Chicago 12



Chicago 13

INFORMAZIONI TECNICHE

*Technical information - informations techniques -
technische Informationen*

Composizione

Composition 100% polyester
 Composition-
 Zusammensetzung

Altezza

Height 141 cm ± 2 cm
 Hauteur
 Höhe

Peso

Weigh 581 g/m² ± 5%
 Poids
 Gewicht

Martindale

Martindale abrasion 43000

Pilling

Resistance to pilling 5



Pulizia facile
 con acqua

Easy water cleaning - Nettoyage facile à l'eau - Einfache
 reinigung mit wasser



Idrorepellente

Water repellent - Hydrofuge
 Wasserabweisend

CURA & MANUTENZIONE

*Care & Maintenance- Entretien et Maintenance -
Pflege & Wartung*



[CABO FRIO »](#)

[CADICE »](#)

[CALCUTTA »](#)

[CALIENTE »](#)

[CALIPSO »](#)

[CANNES »](#)

[CAPE TOWN »](#)

[CAPOLIVERI »](#)

[CARDIFF »](#)

[CAROLINA »](#)

[CARTAGENA »](#)

[CASABLANCA »](#)

[CATANIA »](#)

[CHICAGO »](#)

CINCINNATI

[CIPRO »](#)

[COLUMBIA »](#)

[COPENAGHEN »](#)

[CORDOVA »](#)

[CORK »](#)

[CORVARA »](#)

[COSTARICA »](#)

[CRACOVIA »](#)

[CREMONA »](#)



Ciccinati 01



Ciccinati 05



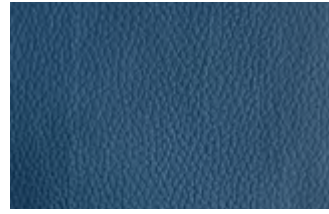
Ciccinati 07



Ciccinati 09



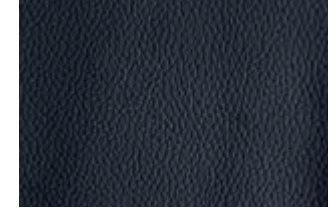
Ciccinati 14



Ciccinati 17



Ciccinati 20



Ciccinati 21

**INFORMAZIONI
 TECNICHE**

*Technical information - informations techniques -
 technische Informationen*

Composizione

Composition 85% PL - 15% PU
 Composition-
 Zusammensetzung

Altezza

Height 140 CM
 Hauteu
 Höhe

Peso

Weigh 530 ± 5% gr/mq
 Poids
 Gewicht

Martindale >120.000

Martindale abrasion

Pilling 5

Resistance to pilling



Idrorepellente
 Water repellent - Hydrofuge
 Wasserabweisend



Irrestringibile
 No shrink - Irrétrécissable
 - krumpfecht

CURA & MANUTENZIONE

*Care & Maintenance- Entretien et Maintenance -
 Pflege & Wartung*



[CABO FRIO »](#)

[CADICE »](#)

[CALCUTTA »](#)

[CALIENTE »](#)

[CALIPSO »](#)

[CANNES »](#)

[CAPE TOWN »](#)

[CAPOLIVERI »](#)

[CARDIFF »](#)

[CAROLINA »](#)

[CARTAGENA »](#)

[CASABLANCA »](#)

[CATANIA »](#)

[CHICAGO »](#)

[CINCINNATI »](#)

CIPRO

[COLUMBIA »](#)

[COPENAGHEN »](#)

[CORDOVA »](#)

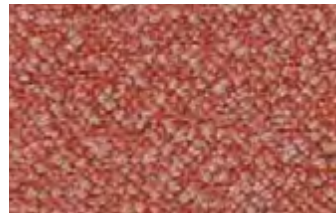
[CORK »](#)

[CORVARA »](#)

[COSTARICA »](#)

[CRACOVIA »](#)

[CREMONA »](#)



Cipro 10



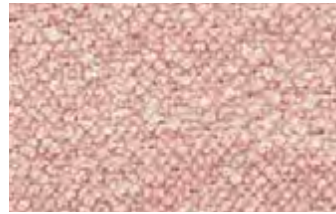
Cipro 12



Cipro 18



Cipro 25



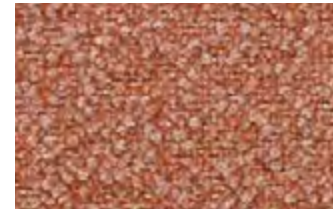
Cipro 35



Cipro 38



Cipro 41



Cipro 44



Cipro 53



Cipro 60



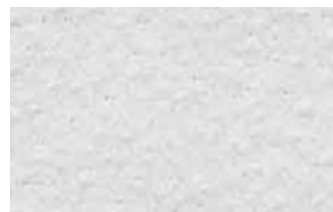
Cipro 62



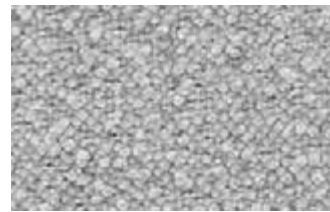
Cipro 63



Cipro 66



Cipro 100



Cipro 101

**INFORMAZIONI
 TECNICHE**

*Technical information - informations techniques -
 technische Informationen*

Composizione 100% PL
*Composition
 Composition-
 Zusammensetzung*

Altezza 140 cm
*Height
 Hauteur
 Höhe*

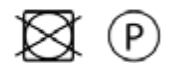
Peso 770±5% g/m
*Weigh
 Poids
 Gewicht*

Martindale ≥ 30.000
Martindale abrasion

Pilling 4
Resistance to pilling

CURA & MANUTENZIONE

*Care & Maintenance- Entretien et Maintenance -
 Pflege & Wartung*



[CABO FRIO »](#)

[CADICE »](#)

[CALCUTTA »](#)

[CALIENTE »](#)

[CALIPSO »](#)

[CANNES »](#)

[CAPE TOWN »](#)

[CAPOLIVERI »](#)

[CARDIFF »](#)

[CAROLINA »](#)

[CARTAGENA »](#)

[CASABLANCA »](#)

[CATANIA »](#)

[CHICAGO »](#)

[CINCINNATI »](#)

[CIPRO »](#)

COLUMBIA

[COPENAGHEN »](#)

[CORDOVA »](#)

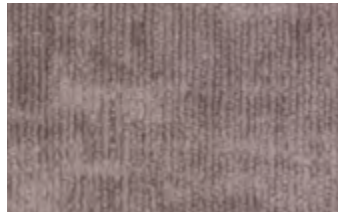
[CORK »](#)

[CORVARA »](#)

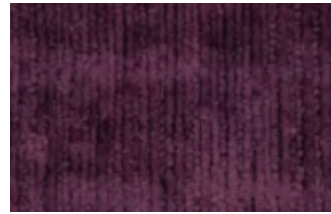
[COSTARICA »](#)

[CRACOVIA »](#)

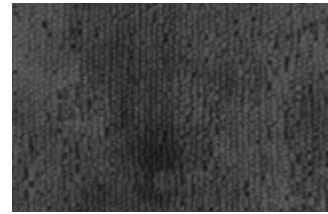
[CREMONA »](#)



Columbia 001



Columbia 002



Columbia 230



Columbia 305



Columbia 401



Columbia 700



Columbia 702



Columbia 704



Columbia 710



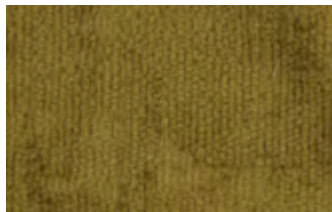
Columbia 711



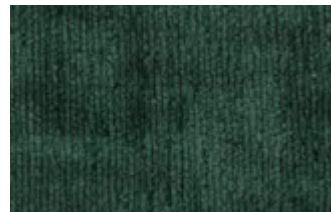
Columbia 714



Columbia 800



Columbia 802



Columbia 803

INFORMAZIONI TECNICHE

Technical information - informations techniques -
technische Informationen

Composizione

Composition 100%PL
 Composition-
 Zusammensetzung

Altezza

Height 140 cm
 Hauteur
 Höhe

Peso

Weigh 630 g/m (+/- 4%)
 Poids
 Gewicht

Martindale

Martindale abrasion >80.000

Pilling

Resistance to pilling 4/5



Idrorepellente
 Water repellent - Hydrofuge
 Wasserabweisend



Irrestringibile
 No shrink - Irrétrécissable
 - krumpfecht

CURA & MANUTENZIONE

Care & Maintenance- Entretien et Maintenance -
 Pflege & Wartung



[CABO FRIO »](#)

[CADICE »](#)

[CALCUTTA »](#)

[CALIENTE »](#)

[CALIPSO »](#)

[CANNES »](#)

[CAPE TOWN »](#)

[CAPOLIVERI »](#)

[CARDIFF »](#)

[CAROLINA »](#)

[CARTAGENA »](#)

[CASABLANCA »](#)

[CATANIA »](#)

[CHICAGO »](#)

[CINCINNATI »](#)

[CIPRO »](#)

[COLUMBIA »](#)

COPENAGHEN

[CORDOVA »](#)

[CORK »](#)

[CORVARA »](#)

[COSTARICA »](#)

[CRACOVIA »](#)

[CREMONA »](#)



Copenhagen 05



Copenhagen 10



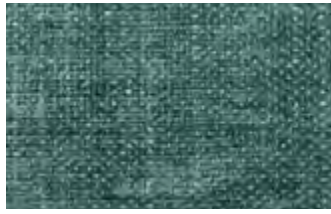
Copenhagen 18



Copenhagen 25



Copenhagen 35



Copenhagen 40



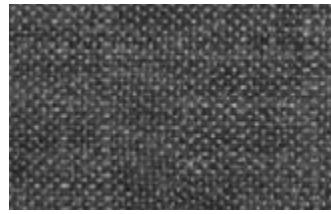
Copenhagen 48



Copenhagen 62



Copenhagen 81



Copenhagen 96



Copenhagen 100

INFORMAZIONI TECNICHE

Technical information - informations techniques - technische Informationen

Composizione

Composition 93%PL 7%LI
Composition-
Zusammensetzung

Altezza

Height 140 cm
Hauteur
Höhe

Peso

Weigh 650±5% g/m
Poids
Gewicht

Martindale

Martindale abrasion ≥ 20.000

Pilling

Resistance to pilling 4

CURA & MANUTENZIONE

*Care & Maintenance- Entretien et Maintenance -
Pflege & Wartung*





Cordova 10



Cordova 11

[CABO FRIO »](#)

[CADICE »](#)

[CALCUTTA »](#)

[CALIENTE »](#)

[CALIPSO »](#)

[CANNES »](#)

[CAPE TOWN »](#)

[CAPOLIVERI »](#)

[CARDIFF »](#)

[CAROLINA »](#)

[CARTAGENA »](#)

[CASABLANCA »](#)

[CATANIA »](#)

[CHICAGO »](#)

[CINCINNATI »](#)

[CIPRO »](#)

[COLUMBIA »](#)

[COPENAGHEN »](#)

[CORDOVA »](#)

[CORK »](#)

[CORVARA »](#)

[COSTARICA »](#)

[CRACOVIA »](#)

[CREMONA »](#)

« Home

INFORMAZIONI TECNICHE

*Technical information - informations techniques -
 technische Informationen*


Composizione 67% polyester,
Composition 24% acrylic, 9%
Composition- cotton
Zusammensetzung

Altezza
Height 146 cm ± 2 cm
Hauteur
Höhe

Peso
Weigh 466 g/m² ± 5%
Poids
Gewicht

Martindale 50 000
Martindale abrasion

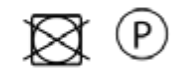
Pilling 5
Resistance to pilling

 Pulizia facile
 con acqua
*Easy water cleaning - Nettoyage facile à l'eau - Einfache
 reinigung mit wasser*

 Idrorepellente
 Water repellent - Hydrofuge
 Wasserabweisend

CURA & MANUTENZIONE

*Care & Maintenance - Entretien et Maintenance -
 Pflege & Wartung*



[CABO FRIO »](#)

[CADICE »](#)

[CALCUTTA »](#)

[CALIENTE »](#)

[CALIPSO »](#)

[CANNES »](#)

[CAPE TOWN »](#)

[CAPOLIVERI »](#)

[CARDIFF »](#)

[CAROLINA »](#)

[CARTAGENA »](#)

[CASABLANCA »](#)

[CATANIA »](#)

[CHICAGO »](#)

[CINCINNATI »](#)

[CIPRO »](#)

[COLUMBIA »](#)

[COPENAGHEN »](#)

[CORDOVA »](#)

CORK

[CORVARA »](#)

[COSTARICA »](#)

[CRACOVIA »](#)

[CREMONA »](#)



Cork 090



Cork 646



Cork 2100

INFORMAZIONI TECNICHE

*Technical information - informations techniques -
technische Informationen*

Composizione

Composition 100% PL
Composition-
Zusammensetzung

Altezza

Height
Hauteur
Höhe

Peso

Weigh 400g/m2
Poids
Gewicht

Martindale 50.000

Martindale abrasion

Pilling

Resistance to pilling

CURA & MANUTENZIONE

*Care & Maintenance- Entretien et Maintenance -
Pflege & Wartung*



[CABO FRIO »](#)

[CADICE »](#)

[CALCUTTA »](#)

[CALIENTE »](#)

[CALIPSO »](#)

[CANNES »](#)

[CAPE TOWN »](#)

[CAPOLIVERI »](#)

[CARDIFF »](#)

[CAROLINA »](#)

[CARTAGENA »](#)

[CASABLANCA »](#)

[CATANIA »](#)

[CHICAGO »](#)

[CINCINNATI »](#)

[CIPRO »](#)

[COLUMBIA »](#)

[COPENAGHEN »](#)

[CORDOVA »](#)

[CORK »](#)

CORVARA

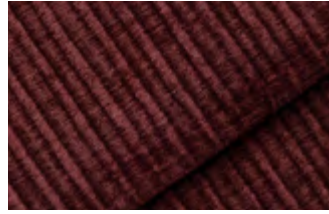
[COSTARICA »](#)

[CRACOVIA »](#)

[CREMONA »](#)



Corvara 02



Corvara 06



Corvara 07



Corvara 08



Corvara 11



Corvara 12

INFORMAZIONI TECNICHE

*Technical information - informations techniques -
technische Informationen*

Composizione 47% polyester,
Composition 45% polyamide,
Composition- 8% viscose
Zusammensetzung

Altezza

Height 140 cm ± 2 cm
Hauteur
Höhe

Peso

Weigh 410 g/m² ± 5%
Poids
Gewicht

Martindale 35 000

Martindale abrasion

Pilling 4/5

Resistance to pilling



Pulizia facile
con acqua

*Easy water cleaning - Nettoyage facile à l'eau - Einfache
reinigung mit wasser*

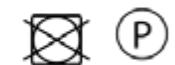


Idrorepellente

*Water repellent - Hydrofuge
Wasserabweisend*

CURA & MANUTENZIONE

*Care & Maintenance - Entretien et Maintenance -
Pflege & Wartung*



[CABO FRIO »](#)

[CADICE »](#)

[CALCUTTA »](#)

[CALIENTE »](#)

[CALIPSO »](#)

[CANNES »](#)

[CAPE TOWN »](#)

[CAPOLIVERI »](#)

[CARDIFF »](#)

[CAROLINA »](#)

[CARTAGENA »](#)

[CASABLANCA »](#)

[CATANIA »](#)

[CHICAGO »](#)

[CINCINNATI »](#)

[CIPRO »](#)

[COLUMBIA »](#)

[COPENAGHEN »](#)

[CORDOVA »](#)

[CORK »](#)

[CORVARA »](#)

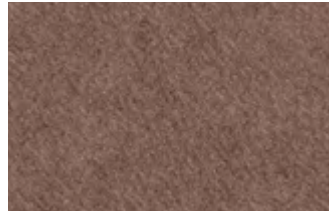
COSTARICA

[CRACOVIA »](#)

[CREMONA »](#)



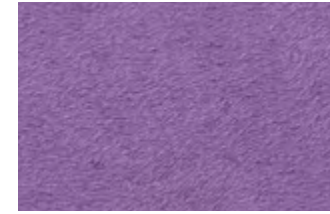
Costarica 17



Costarica 16



Costarica 18



Costarica 21



Costarica 24

INFORMAZIONI TECNICHE

*Technical information - informations techniques -
technische Informationen*

Composizione 100% PES

*Composition
Composition-
Zusammensetzung*

Altezza

*Height
Hauteur
Höhe* 142 cm

Peso

*Weigh
Poids
Gewicht* 550 g/m2 +/-10%

Martindale

Martindale abrasion 45.000

Pilling

Resistance to pilling 4



Idrorepellente

*Water repellent - Hydrofuge
Wasserabweisend*

CURA & MANUTENZIONE

*Care & Maintenance- Entretien et Maintenance -
Pflege & Wartung*



[CABO FRIO »](#)

[CADICE »](#)

[CALCUTTA »](#)

[CALIENTE »](#)

[CALIPSO »](#)

[CANNES »](#)

[CAPE TOWN »](#)

[CAPOLIVERI »](#)

[CARDIFF »](#)

[CAROLINA »](#)

[CARTAGENA »](#)

[CASABLANCA »](#)

[CATANIA »](#)

[CHICAGO »](#)

[CINCINNATI »](#)

[CIPRO »](#)

[COLUMBIA »](#)

[COPENAGHEN »](#)

[CORDOVA »](#)

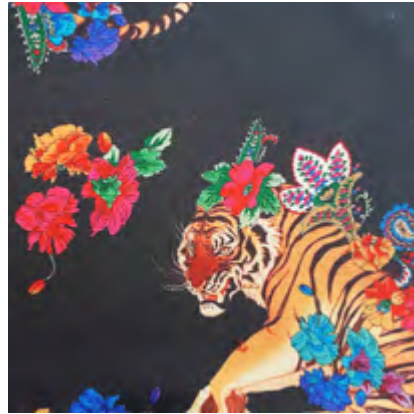
[CORK »](#)

[CORVARA »](#)

[COSTARICA »](#)

CRACOVIA

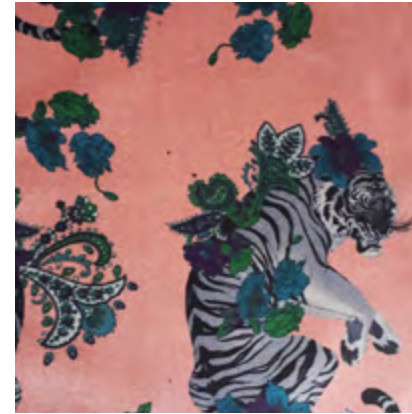
[CREMONA »](#)



Cracovia 200



Cracovia 600



Cracovia 900

INFORMAZIONI TECNICHE

Technical information - informations techniques - technische Informationen

Composizione 100%PL
 Composition
 Composition-
 Zusammensetzung

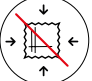
Altezza 140 cm
 Height
 Hauteur
 Höhe

Peso 525 g/m (+/- 4%)
 Weigh
 Poids
 Gewicht

Martindale 20.000
 Martindale abrasion

Pilling 5
 Resistance to pilling

 **Idrorepellente**
 Water repellent - Hydrofuge
 Wasserabweisend

 **Irrestringibile**
 No shrink - Irrétrécissable
 - krumpfecht

CURA & MANUTENZIONE

Care & Maintenance - Entretien et Maintenance - Pflege & Wartung



[CABO FRIO »](#)

[CADICE »](#)

[CALCUTTA »](#)

[CALIENTE »](#)

[CALIPSO »](#)

[CANNES »](#)

[CAPE TOWN »](#)

[CAPOLIVERI »](#)

[CARDIFF »](#)

[CAROLINA »](#)

[CARTAGENA »](#)

[CASABLANCA »](#)

[CATANIA »](#)

[CHICAGO »](#)

[CINCINNATI »](#)

[CIPRO »](#)

[COLUMBIA »](#)

[COPENAGHEN »](#)

[CORDOVA »](#)

[CORK »](#)

[CORVARA »](#)

[COSTARICA »](#)

[CRACOVIA »](#)

CREMONA



Cremona 01



Cremona 02



Cremona 03



Cremona 05



Cremona 07

INFORMAZIONI TECNICHE

*Technical information - informations techniques -
 technische Informationen*


Composizione 66% acrylic, 34%
 Composition polyester
 Composition-
 Zusammensetzung

Altezza
 Height 140 cm ± 2 cm
 Hauteur
 Höhe

Peso
 Weigh 570 g/m² ± 5%
 Poids
 Gewicht

Martindale 40 000
 Martindale abrasion

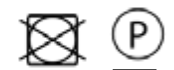
Pilling 4
 Resistance to pilling

 Pulizia facile
 con acqua
*Easy water cleaning - Nettoyage facile à l'eau - Einfache
 reinigung mit wasser*

 Idrorepellente
 Water repellent - Hydrofuge
 Wasserabweisend

CURA & MANUTENZIONE

*Care & Maintenance - Entretien et Maintenance -
 Pflege & Wartung*



PELLE

Leather - Cuir - Leder



PALLADIO »

Selezione di rivestimenti per divani letto e poltrone in pelle di categoria 1. Pelle morbida, sobria con elevata resistenza ad una vita familiare dinamica ed attiva. Spessore 1,3-1,5 mm con grana stampata e regolare.

Selection of covers for sofa beds and leather armchairs category 1. Soft, sober leather with high resistance to a dynamic and active family life. Thickness 1.3-1.5 mm with printed and regular grain.

Sélection de revêtements pour canapés-lits et fauteuils en cuir de catégorie 1. Cuir doux, sobre avec une résistance élevée à une vie familiale dynamique et active. Épaisseur 1,3-1,5 mm avec grain imprimé et régulier.

Auswahl an Bezügen für Schlafsofas und Ledersessel der Kategorie 1. Weiches, zurückhaltendes Leder mit hoher Beständigkeit gegen ein dynamisches und aktives Familienleben. Dicke 1,3-1,5 mm mit bedruckter und regelmäßiger Körnung.

PALLADIO



Palladio 2100



Palladio 2105



Palladio 2110



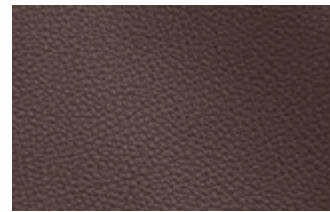
Palladio 2115



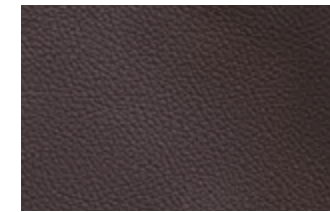
Palladio 2130



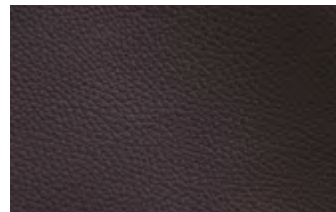
Palladio 2135



Palladio 2140



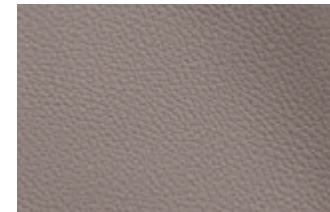
Palladio 2145



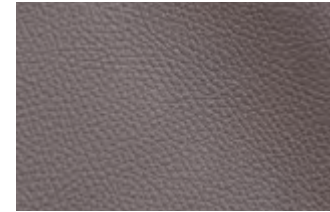
Palladio 2150



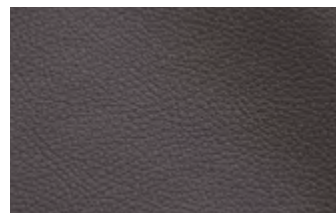
Palladio 2155



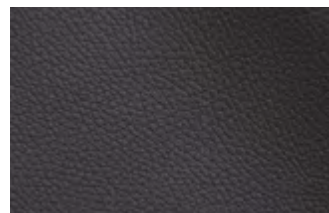
Palladio 2160



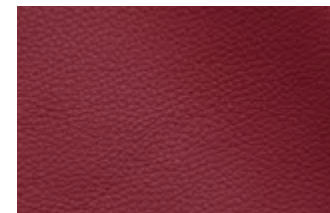
Palladio 2165



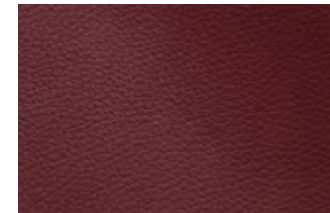
Palladio 2170



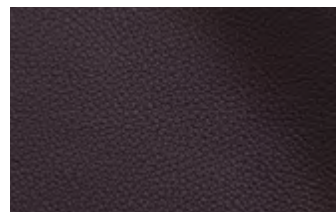
Palladio 2175



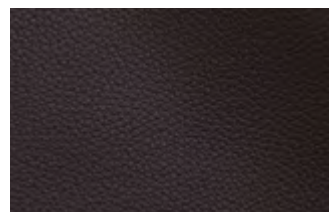
Palladio 2180



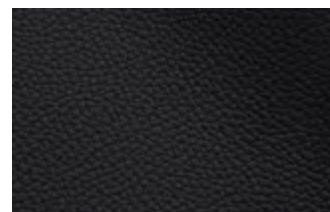
Palladio 2185



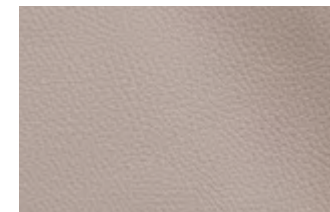
Palladio 2190



Palladio 2195



Palladio 2200



Palladio 2205

**INFORMAZIONI
TECNICHE**

*Technical information - informations techniques -
technische Informationen*

Composizione Pelle Bovina
Composition Bovine leather
Composition-
Zusammensetzung

Spessore 1,3 - 1,5mm
Thickness
épaisseur
Dicke

Pelle morbida con elevata
resistenza e bottalata con grana
dollaro

*Soft leather with high resistance and
dollar grain punch*

*Cuir souple à haute résistance et
poinçon à grain dollar*

*Weiches Leder mit hoher Widerstand-
sfähigkeit und Dollar-Kornprägung*

CURA & MANUTENZIONE

*Care & Maintenance- Entretien et Maintenance -
Pflege & Wartung*

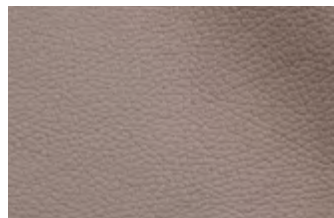
Pulire delicatamente con un panno
umido e prodotti delicati. Evitare
l'uso di prodotti abrasivi o vapore.

*Clean gently with a damp cloth and gentle
products. Avoid using abrasive products
or steam.*

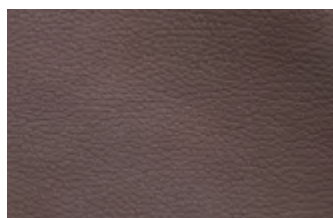
*Nettoyez délicatement avec un chiffon hu-
mide et des produits doux. Évitez d'utiliser
des produits abrasifs ou de la vapeur.*

*Sanft mit einem feuchten Tuch und
milden Produkten reinigen. Vermeiden Sie
die Verwendung von abrasiven Produkten
oder Dampf.*

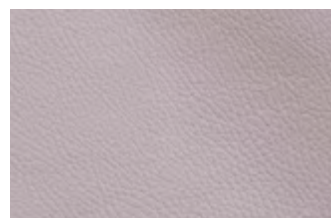
PALLADIO



Palladio 2210



Palladio 2215



Palladio 2220

INFORMAZIONI
TECNICHE

*Technical information - informations techniques -
technische Informationen*

Composizione Pelle Bovina
Composition Bovine leather
Composition-
Zusammensetzung

Spessore
Thickness 1,3 - 1,5mm
épaisseur
Dicke

Pelle morbida con elevata
resistenza e bottalata con grana
dollaro

*Soft leather with high resistance and
dollar grain punch*

*Cuir souple à haute résistance et
poinçon à grain dollar*

*Weiches Leder mit hoher Widerstand-
sfähigkeit und Dollar-Kornprägung*

CURA & MANUTENZIONE

*Care & Maintenance- Entretien et Maintenance -
Pflege & Wartung*

Pulire delicatamente con un panno
umido e prodotti delicati. Evitare
l'uso di prodotti abrasivi o vapore.

*Clean gently with a damp cloth and gentle
products. Avoid using abrasive products
or steam.*

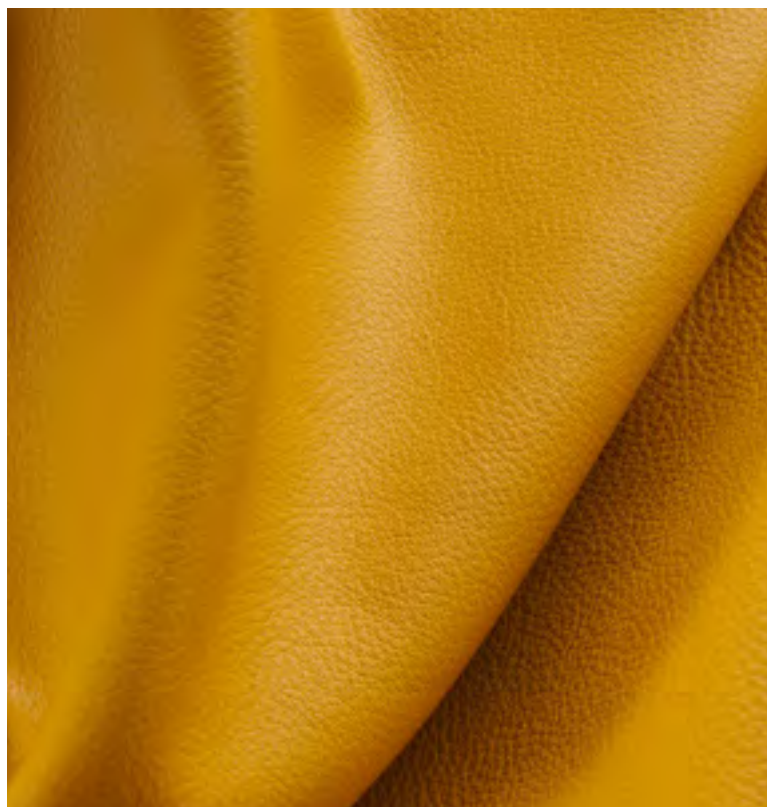
*Nettoyez délicatement avec un chiffon hu-
mide et des produits doux. Évitez d'utiliser
des produits abrasifs ou de la vapeur.*

*Sanft mit einem feuchten Tuch und
milden Produkten reinigen. Vermeiden Sie
die Verwendung von abrasiven Produkten
oder Dampf.*

2

PELLE

Leather - Cuir - Leder



Selezione di rivestimenti per divani letto e poltrone in pelle di categoria 2. Pelle versatile dalla mano guantata e il tatto setoso. Spessore 1,3-1,5 mm in grana naturale leggermente ritoccato.

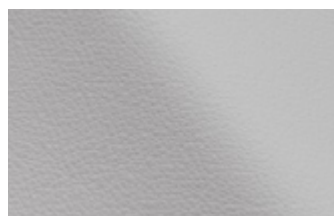
Selection of upholstery for sofa beds and leather armchairs category 2. Versatile leather with gloved hands and silky touch. Thickness 1.3-1.5 mm in slightly retouched natural grain.

Sélection de revêtements pour canapés-lits et fauteuils en cuir de catégorie 2. Cuir polyvalent à la main gantée et au toucher soyeux. Épaisseur 1,3-1,5 mm en grain naturel légèrement retouché.

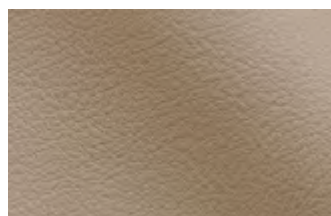
Auswahl an Bezügen für Schlafsofas und Ledersessel der Kategorie 2. Vielseitiges Leder mit Handschuh und seidigem Griff. Dicke 1,3-1,5 mm in natürlicher Körnung leicht retuschiert.

SETA »

SETA



Seta 9000



Seta 9057



Seta 9010



Seta 9045



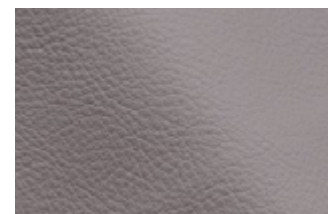
Seta 9049



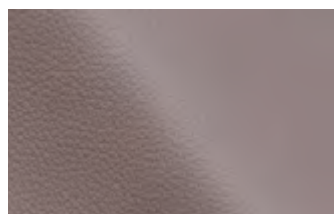
Seta 9043



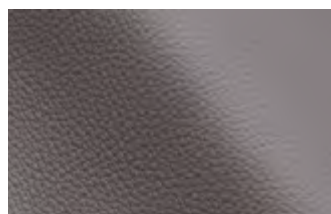
Seta 9012



Seta 9044



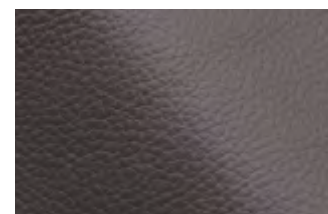
Seta 9013



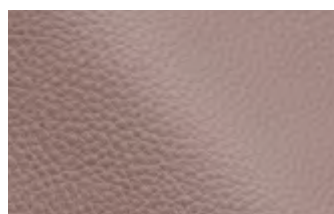
Seta 9015



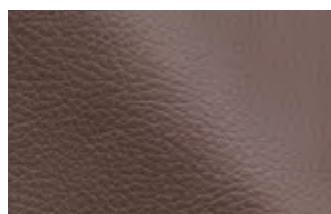
Seta 9046



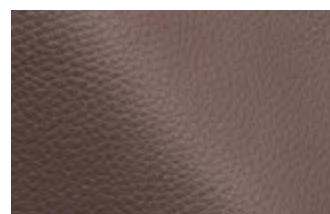
Seta 9016



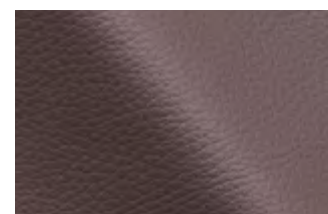
Seta 9018



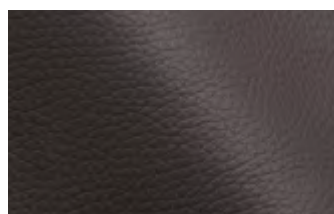
Seta 9048



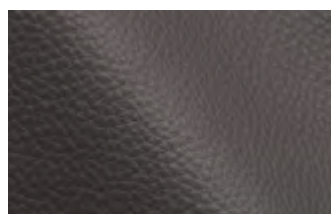
Seta 9020



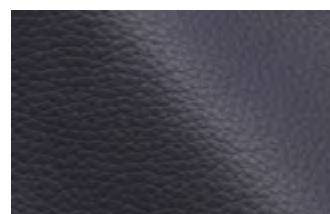
Seta 9022



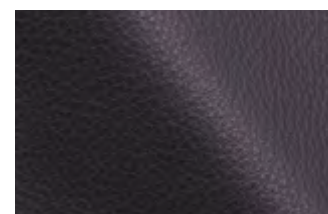
Seta 9024



Seta 9025



Seta 9027



Seta 9035

INFORMAZIONI
TECNICHE

*Technical information - informations techniques -
technische Informationen*

Composizione Pelle Bovina
Composition Bovine leather
Composition-
Zusammensetzung

Spessore 1,3 - 1,5mm
Thickness
épaisseur
Dicke

Pelle versatile dalla mano guantata e il tatto setoso, in grana naturale.

Versatile leather with a gloved hand feel and silky touch, in natural grain.

Cuir polyvalent au toucher ganté et soyeux, à la grain naturelle.

Vielseitiges Leder mit einem handschuhartigen Griff und seidigem Touch, in natürlicher Narbung.

CURA & MANUTENZIONE

*Care & Maintenance- Entretien et Maintenance -
Pflege & Wartung*

Pulire delicatamente con un panno umido e prodotti delicati. Evitare l'uso di prodotti abrasivi o vapore.

Clean gently with a damp cloth and gentle products. Avoid using abrasive products or steam.

Nettoyez délicatement avec un chiffon humide et des produits doux. Évitez d'utiliser des produits abrasifs ou de la vapeur.

Sanft mit einem feuchten Tuch und milden Produkten reinigen. Vermeiden Sie die Verwendung von abrasiven Produkten oder Dampf.

SETA



Seta 9033



Seta 9047



Seta 9058



Seta 9059



Seta 9001



Seta 9079



Seta 9060



Seta 9061



Seta 9062



Seta 9011



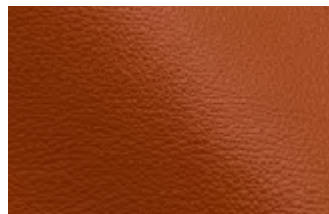
Seta 9003



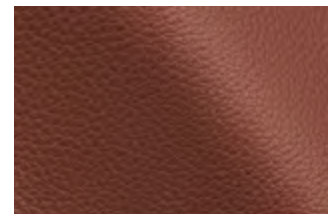
Seta 9028



Seta 9008



Seta 9064



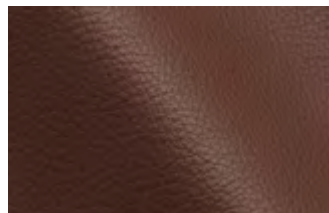
Seta 9007



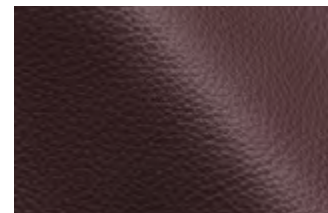
Seta 9004



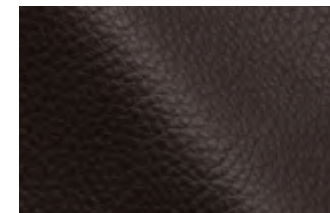
Seta 9006



Seta 9009



Seta 9030



Seta 9032

INFORMAZIONI
TECNICHE

Technical information - informations techniques -
technische Informationen

Composizione Pelle Bovina
Composition Bovine leather
Composition-
Zusammensetzung

Spessore 1,3 - 1,5mm
Thickness
épaisseur
Dicke

Pelle versatile dalla mano guantata e il tatto setoso, in grana naturale.

Versatile leather with a gloved hand feel and silky touch, in natural grain.

Cuir polyvalent au toucher ganté et soyeux, à la grain naturelle.

Vielseitiges Leder mit einem hand-schuhartigen Griff und seidigem Touch, in natürlicher Narbung.

CURA & MANUTENZIONE

Care & Maintenance- Entretien et Maintenance -
Pflege & Wartung

Pulire delicatamente con un panno umido e prodotti delicati. Evitare l'uso di prodotti abrasivi o vapore.

Clean gently with a damp cloth and gentle products. Avoid using abrasive products or steam.

Nettoyez délicatement avec un chiffon humide et des produits doux. Évitez d'utiliser des produits abrasifs ou de la vapeur.

Sanft mit einem feuchten Tuch und milden Produkten reinigen. Vermeiden Sie die Verwendung von abrasiven Produkten oder Dampf.

SETA



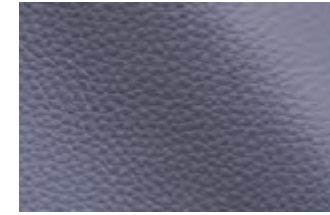
Seta 9037



Seta 9034



Seta 9036



Seta 9040



Seta 9038



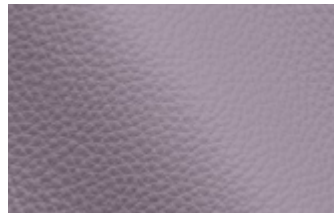
Seta 9065



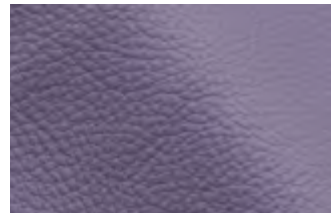
Seta 9039



Seta 9042



Seta 9031



Seta 9023



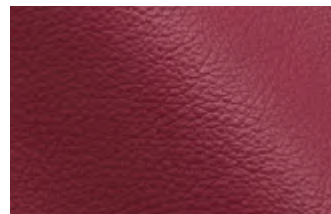
Seta 9026



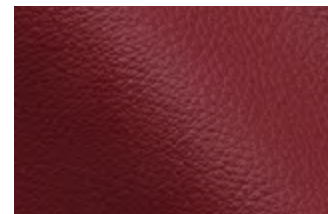
Seta 9066



Seta 9067



Seta 9068



Seta 9069



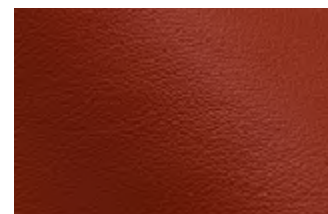
Seta 9070



Seta 9071



Seta 9005



Seta 9072



Seta 9017

INFORMAZIONI
TECNICHE

*Technical information - informations techniques -
technische Informationen*

Composizione Pelle Bovina
Composition Bovine leather
*Composition-
Zusammensetzung*

Spessore 1,3 - 1,5mm
Thickness
épaisseur
Dicke

Pelle versatile dalla mano guantata e il tatto setoso, in grana naturale.

Versatile leather with a gloved hand feel and silky touch, in natural grain.

Cuir polyvalent au toucher ganté et soyeux, à la grain naturelle.

Vielseitiges Leder mit einem hand-schuhartigen Griff und seidigem Touch, in natürlicher Narbung.

CURA & MANUTENZIONE

*Care & Maintenance- Entretien et Maintenance -
Pflege & Wartung*

Pulire delicatamente con un panno umido e prodotti delicati. Evitare l'uso di prodotti abrasivi o vapore.

Clean gently with a damp cloth and gentle products. Avoid using abrasive products or steam.

Nettoyez délicatement avec un chiffon humide et des produits doux. Évitez d'utiliser des produits abrasifs ou de la vapeur.

Sanft mit einem feuchten Tuch und milden Produkten reinigen. Vermeiden Sie die Verwendung von abrasiven Produkten oder Dampf.

SETA



Seta 9029



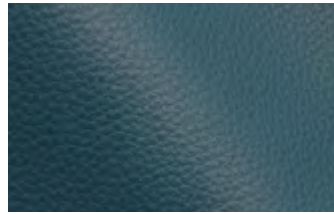
Seta 9014



Seta 9021



Seta 9056



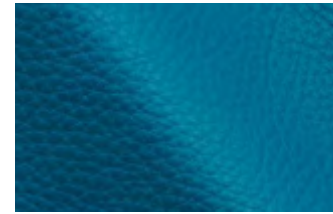
Seta 9019



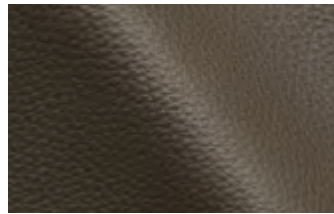
Seta 9054



Seta 9055



Seta 9041



Seta 9050



Seta 9073



Seta 9053



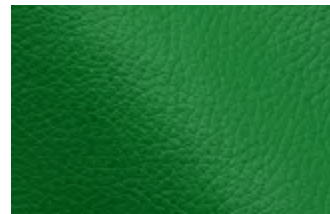
Seta 9052



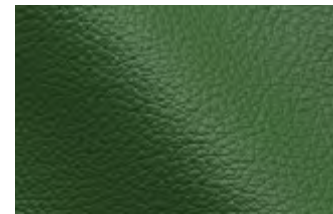
Seta 9051



Seta 9074



Seta 9075



Seta 9076



Seta 9077



Seta 9002



Seta 9078

INFORMAZIONI
TECNICHE

*Technical information - informations techniques -
technische Informationen*

Composizione Pelle Bovina
Composition Bovine leather
Composition-
Zusammensetzung

Spessore 1,3 - 1,5mm
Thickness
épaisseur
Dicke

Pelle versatile dalla mano guantata e il tatto setoso, in grana naturale.

Versatile leather with a gloved hand feel and silky touch, in natural grain.

Cuir polyvalent au toucher ganté et soyeux, à la grain naturelle.

Vielseitiges Leder mit einem hand-schuhartigen Griff und seidigem Touch, in natürlicher Narbung.

CURA & MANUTENZIONE

*Care & Maintenance- Entretien et Maintenance -
Pflege & Wartung*

Pulire delicatamente con un panno umido e prodotti delicati. Evitare l'uso di prodotti abrasivi o vapore.

Clean gently with a damp cloth and gentle products. Avoid using abrasive products or steam.

Nettoyez délicatement avec un chiffon humide et des produits doux. Évitez d'utiliser des produits abrasifs ou de la vapeur.

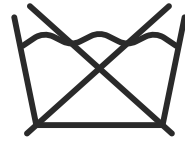
Sanft mit einem feuchten Tuch und milden Produkten reinigen. Vermeiden Sie die Verwendung von abrasiven Produkten oder Dampf.

CURA & MANUTENZIONE:
GUIDA ALLE
ICONE

Care & Maintenance:
ICON GUIDE

Soin & Maintenance:
GUIDE DES ICÔNES

Pflege & Wartung:
SYMBOLLEITFADEN



DO NOT WASH



HAND WASH **CYCLES**
IN MACHINE WASH



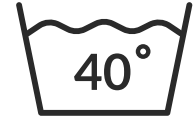
MACHINE WASH,
PERMANENT PRESS



MACHINE WASH,
DELICATE



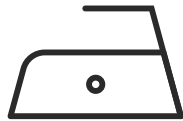
WASH AT OR BELOW
30°C



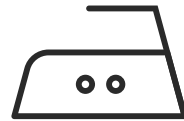
WASH AT OR BELOW
40°C



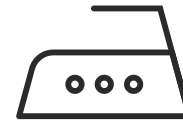
IRONING



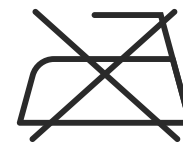
LOW TEMPERATURE



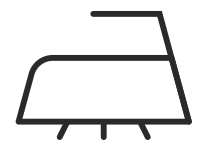
MEDIUM TEMPERATURE



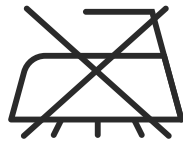
HIGH TEMPERATURE



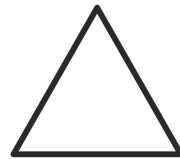
DO NOT IRON



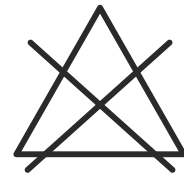
STEAM AS NEEDED



DO NOT STEAM



BLEACHING



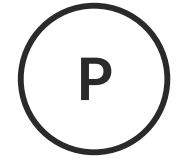
DO NOT BLEACH



DRY CLEAN,
PCE ONLY



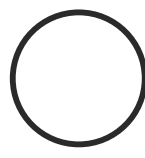
DRY CLEAN,
DELICATE



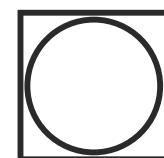
DRY CLEAN,
VERY DELICATE



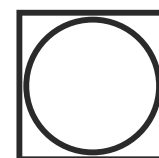
DO NOT DRY CLEAN



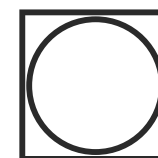
DRY CLEAN,



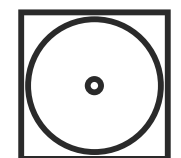
PERMANENT
PRESS CYCLE



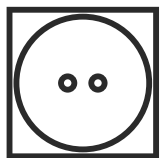
DELICATE,
GENTLE CYCLE



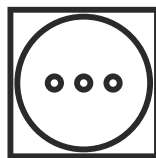
TUMBLE DRY



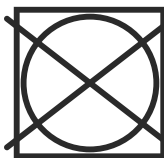
TUMBLE DRY,
LOW HEAT



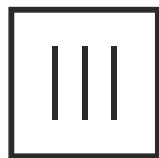
TUMBLE DRY,
MEDIUM HEAT



TUMBLE DRY,
HIGH HEAT



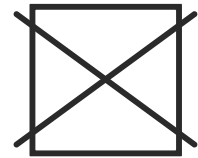
DO NOT TUMBLE DRY



DRIP DRY



DRYING



DO NOT DRY